

**DOOSAN**

Full Liner |



# Compact Excavators



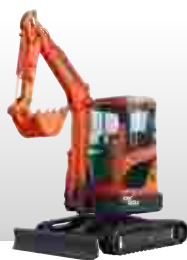
## ➤ Dx10Z

Operating weight	kg	1200
Engine power	hp / kW @ rpm	9.9 / 7.4 @ 2000
Bucket capacity (SAE)	m <sup>3</sup>	0.025



## ➤ Dx30Z

3180
24.3 / 18.1 @ 2400
0.091



## ➤ Dx35Z

3660
26.1 / 19.5 @ 2200
0.11



## ➤ Dx62R-3

6250
48.5 / 36.2 @ 2200
0.175



## ➤ Compact Excavators

	Unit	Dx10Z	Dx17Z	Dx19
Operating weight	kg	1200	1700	1900
Bucket capacity (SAE)	m <sup>3</sup>	0.025	0.058	0.065
Travel speed	km/h	2.1 - 3.1	2.5 - 4.0	2.5 - 4.0
Engine model	-	Kubota D722-E2B-BCZ-6	Kubota D722-E2B-BCZ-7	Kubota D722-E2B-BCZ-7
Power	hp / kW @ rpm	9.9 / 7.4 @ 2000	13.3 / 9.9 @ 2500	13.3 / 9.9 @ 2500
Digging reach	mm	3145	3971	4257
Digging depth	mm	1820	2249	2565
Digging height	mm	2685	3378	3701
Length	mm	2793	3450	3812
Width	mm	710	980	1360 (980)
Height	mm	2209	2297	2299



➤ **Dx17Z**



➤ **Dx19**



➤ **Dx27Z**

1700

13.3 / 9.9 @ 2500

0.058

1900

13.3 / 9.9 @ 2500

0.065

2850

21.2 / 15.8 @ 2200

0.08



➤ **Dx63-3**



6250

48.5 / 36.2 @ 2400

0.175



➤ **Dx85R-3**



8600

59.4 / 44.3 @ 2100

0.28

Dx27Z	Dx30Z	Dx35Z	Dx62R-3	Dx63-3	Dx85R-3
2850	3180	3660	6250	6250	8600
0.08	0.091	0.11	0.175	0.175	0.28
2.4 - 4.3	2.6 - 4.6	2.4 - 4.6	2.6 - 4.7	2.6 - 4.7	2.7 - 4.7
Yanmar	Yanmar	Yanmar	Yanmar	Yanmar	Yanmar
3TNV82A-SDB	3TNV82A-PDB	3TNV88	4TNV94L	4TNV94L	4TNV98
21.2 / 15.8 @ 2200	24.3 / 18.1 @ 2400	26.1 / 19.5 @ 2200	48.5 / 36.2 @ 2200	48.5 / 36.2 @ 2200	59.4 / 44.3 @ 2100
4690	4984	5200	6525	6355	7430
2690	2948	3155	4115	4115	4725
4280	4618	4880	6005	6005	6980
4060	4507	4645	5670	5685	6265
1570	1550	1700	1980	1980	2300
2445	2480	2515	2550	2550	2640

# Wheeled Excavators



➤ **DX57W-5**



Operating weight	kg	5790
Engine power	hp / kW @ rpm	52.3 / 42.5 @ 2400
Bucket capacity (SAE)	m <sup>3</sup>	0.175



➤ **DX165W-5**



16120 - 17920  
137 / 102 @ 2200  
0.24 - 0.76



➤ **DX170W-5**




16630 - 18700  
152 / 113 @ 2000  
0.32 - 0.90

## ➤ Wheeled Excavators

	Unit	DX57W-5	DX140W-5
Operating weight	kg	5790	14450 - 16750
Bucket capacity (SAE)	m <sup>3</sup>	0.175	0.24 - 0.76
Travel speed	km/h	10 - 30	3.5 - 37
Engine model	-	Doosan D24	Doosan DL06P
Power	hp / kW @ rpm	52.3 / 42.5 @ 2400	137 / 102 @ 2000
Digging reach	mm	6108	7585
Digging depth	mm	3495	4490
Digging height	mm	5976	8195
Length	mm	6120	7420
Width	mm	1920	2500
Height	mm	2855	3052



➤ **DX140W-5** 

14450 - 16750  
137 / 102 @ 2000  
0.24 - 0.76



➤ **DX160W-5** 

15040 - 17150  
137 / 102 @ 2000  
0.24 - 0.76



➤ **DX190W-5** 

19000 - 20500  
174 / 129 @ 1900  
0.38 - 0.93



➤ **DX210W-5** 

21390 - 21730  
189 / 141 @ 1900  
0.51 - 1.32

DX160W-5	DX165W-5	DX170W-5	DX190W-5	DX210W-5
15040 - 17150	16120 - 17920	16630 - 18700	19000 - 20500	21390 - 21730
0.24 - 0.76	0.24 - 0.76	0.32 - 0.90	0.38 - 0.93	0.51 - 1.32
3.5 - 37	3.5 - 37	3.0 - 37	3.0 - 35	4.0 - 35
Doosan DLo6P	Perkins 1204F	Doosan DLo6P	Doosan DLo6P	Doosan DLo6P
137 / 102 @ 2000	137 / 102 @ 2200	152 / 113 @ 2000	174 / 129 @ 1900	189 / 141 @ 1900
8670	8670	8875	9255	9980
5455	5455	5315	5725	6160
9565	9565	9140	9440	10140
7975	7934	8219	8750	9448
2500	2490	2530	2530 - 2750	2530 - 2750
3052	3108	3075	3134	3141

# Crawler Excavators



➤ **DX140LCR-5**



Operating weight	kg	15100 - 15500
Engine power	hp / kW @ rpm	115 / 86 @ 2000
Bucket capacity (SAE)	m <sup>3</sup>	0.24 - 0.76



➤ **DX225LC-5**



22100 - 23000
166 / 124 @ 1800
0.39 - 1.49



➤ **DX235LC-5**



22800 - 23700
166 / 124 @ 1800
0.51 - 1.32

## ➤ Crawler Excavators

	Unit	DX140LCR-5	DX140LC-5
Operating weight	kg	15100 - 15500	14100 - 14600
Bucket capacity (SAE)	m <sup>3</sup>	0.24 - 0.76	0.24 - 0.76
Travel speed	km/h	2.8 - 4.7	3.0 - 5.0
Engine model	-	Perkins 1204F	Perkins 1204F
Power	hp / kW @ rpm	115 / 86 @ 2000	115 / 86 @ 2000
Digging reach	mm	8285	8285
Digging depth	mm	5485	5635
Digging height	mm	9265	8660
Length	mm	7360	7685
Width	mm	2590	2590
Height	mm	2835	2820



## DX140LC-5



14100 - 14600  
115 / 86 @ 2000  
0.24 - 0.76



## DX180LC-5



18100 - 19400  
131 / 98 @ 2000  
0.38 - 0.93



## DX235NLC-5



22400 - 22800  
166 / 124 @ 1800  
0.51 - 1.28



## DX235LCR-5



24300 - 25200  
189 / 141 @ 1900  
0.51 - 1.32

DX180LC-5	DX225LC-5	DX235LC-5	DX235NLC-5	DX235LCR-5
18100 - 19400	22100 - 23000	22800 - 23700	22400 - 22800	24300 - 25200
0.38 - 0.93	0.39 - 1.49	0.51 - 1.28	0.51 - 1.49	0.51 - 1.32
3.1 - 5.1	3.0 - 5.5	3.0 - 5.5	3.0 - 5.5	3.2 - 5.8
Perkins 1204F	Doosan DLo6P	Doosan DLo6P	Doosan DLo6P	Doosan DLo6P
131 / 98 @ 2000	166 / 124 @ 1800	166 / 124 @ 1800	166 / 124 @ 1800	189 / 141 @ 1800
9190	9880	9465	9465	9820
6110	6580	6080	6080	6670
9170	9555	9450	9450	10795
8770	9495	9505	9505	8975
2540 - 2800	2990	2990	2540	2990
2925	2980	2985	2985	2970

# Crawler Excavators



➤ DX255LC-5



Operating weight	kg	25400 - 26500
Engine power	hp / kW @ rpm	190 / 141 @ 1900
Bucket capacity (SAE)	m <sup>3</sup>	0.51 - 1.49



➤ DX380LC-5



40200 - 41600		42600 - 44100
318 / 237 @ 1800		345 / 257 @ 1800
1.20 - 2.01		1.44 - 2.31



➤ DX420LC-5



## ➤ Crawler Excavators

	Unit	DX255LC-5	DX300LC-5
Operating weight	kg	25400 - 26500	30900 - 32000
Bucket capacity (SAE)	m <sup>3</sup>	0.51 - 1.49	0.80 - 1.75
Travel speed	km/h	3.1 - 5.3	3.0 - 5.5
Engine model	-	Doosan DLo6P	Doosan DLo8P
Power	hp / kW @ rpm	190 / 141 @ 1900	271 / 202 @ 1800
Digging reach	mm	10175	10725
Digging depth	mm	6815	7305
Digging height	mm	9705	10325
Length	mm	10080	10570
Width	mm	3000 - 3200	3000 - 3200
Height	mm	3200	3370





➤ DX300LC-5



30900 - 32000  
271 / 202 @ 1800  
0.80 - 1.75



➤ DX340LC-5



36200 - 37300  
286 / 213 @ 1800  
1.20 - 2.01



➤ DX490LC-5



49600 - 51300  
380 / 283 @ 1800  
1.73 - 3.60



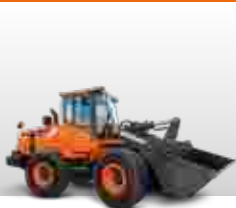
➤ DX530LC-5




52100 - 53900  
380 / 283 @ 1800  
1.73 - 3.60


DX340LC-5	DX380LC-5	DX420LC-5	DX490LC-5	DX530LC-5
36200 - 37300	40200 - 41600	42600 - 44100	49600 - 51300	52100 - 53900
1.20 - 2.01	1.20 - 2.01	1.44 - 2.31	1.73 - 3.60	1.73 - 3.60
3.9 - 6.3	3.4 - 5.9	3.1 - 5.1	3.1 - 5.4	3.1 - 5.4
Doosan DLo8P	Scania DC09	Scania DC13	Scania DC13	Scania DC13
286 / 213 @ 1800	318 / 237 @ 1800	345 / 257 @ 1800	380 / 283 @ 1800	380 / 283 @ 1800
11170	11170	11495	12125	10735
7535	7460	7740	7790	6755
10315	10390	10820	11050	9630
11315	11280	11750	12230	11530
3000 - 3280	3000 - 3350	3000 - 3350	2990 - 3490	2990 - 3490
3390	3390	3455	3340 - 3900	3340 - 3900
			3705	4165

# Wheel Loaders




➤ DL200-5 




➤ DL220-5 

Operating weight	kg	11700	12790
Engine power	hp/kW @ rpm	142 / 106 @ 2200	160 / 119 @ 2100
Bucket capacity (SAE)	m <sup>3</sup>	2.0	2.3



➤ DL280-5 



➤ DL300-5 

15682	18825
172 / 128 @ 2100	271 / 202 @ 1800
2.8	3.2

## ➤ Wheel Loaders

	Unit	DL200-5	DL200-5 TC	DL220-5
Operating weight	kg	11700	11895	12790
Bucket range (GP)	m <sup>3</sup>	1.9 - 2.0	1.9 - 2.0	2.2 - 2.3
Engine model	-	Perkins 1204F	Perkins 1204F	Doosan DL6P
Power	hp / kW @ rpm	142 / 106 @ 2200	142 / 106 @ 2200	160 / 119 @ 2100
Bucket capacity (SAE)	m <sup>3</sup>	2.0	2.0	2.3
Tipping load (straight / full turn at 40°)	kg	9560 / 8445	8540 / 7540	9630 / 8505
Max. dump height on pivot	mm	3730	3810	3860
Breakout force	kN	100	95	101
Maximum speed	km/h	38	38	39
Turning radius at bucket	mm	5795	5740	5950
Tyres	-	20,5 R25	20,5 R25	20,5 R25
Length	mm	7135	7315	7445
Width	mm	2530	2530	2640
Height	mm	3280	3280	3280



## DL200/250TC-5



11895 & 14330

142 / 106 @ 2200  
& 172 / 128 @ 2100

2.0 & 2.5



## DL250-5



14215

172 / 128 @ 2100

2.5



## DL350-5



19863

271 / 202 @ 1800

3.5



## DL420-5



23035

345 / 257 @ 1800

4.2

DL250-5	DL250-5 TC	DL280-5	DL300-5	DL350-5	DL420-5
14215	14330	15682	18825	19863	23035
2.4 - 2.5	2.4 - 2.5	2.7 - 2.8	3.0 - 3.2	3.5 - 3.9	3.9 - 4.2
Doosan DL06P	Doosan DL06P	Doosan DL06P	Doosan DL08P	Doosan DL08P	Scania DC13
172 / 128 @ 2100	176 / 128 @ 2100	172 / 128 @ 2100	271 / 202 @ 1800	271 / 202 @ 1800	345 / 257 @ 1800
2.5	2.5	2.8	3.2	3.7	4.2
11135 / 9835	9565 / 8450	12449 / 12014	14996 / 13242	16039 / 14163	18400 / 16250
3858	3934	3940	3975	4170	4280
106	102	145	168	165	210
38	38	36	37	37	37
6045	6147	6115	6405	6615	6955
20,5 R25	20,5 R25	20,5 R25	23,5 R25	23,5 R25	26,5 R25
7470	7805	7800	8095	8320	8720
2640	2640	2570	2750	2750	2985
3280	3280	3310	3475	3475	3535

# Wheel Loaders



➤ DL420CVT-5



➤ DL450-5



Operating weight	kg	23080	25795
Engine power	hp / kW @ rpm	311 / 232 @ 1800	345 / 257 @ 1800
Bucket capacity (SAE)	m <sup>3</sup>	4.2	4.5



➤ DL550-5



➤ DL580-5



32770	36030
380 / 283 @ 1800	380 / 283 @ 1800
5.4	5.7

## ➤ Wheel Loaders

	Unit	DL420CVT-5	DL450-5	DL550-5	DL580-5
Operating weight	kg	23080	25795	32770	36030
Bucket range (GP)	m <sup>3</sup>	4.0 - 4.2	4.5 - 4.8	4.8 - 5.7	5.4 - 5.7
Engine model	-	Scania DC09	Scania DC13	Scania DC13	Scania DC13
Power	hp / kW @ rpm	311 / 232 @ 1800	345 / 257 @ 1800	380 / 283 @ 1800	380 / 283 @ 1800
Bucket capacity (SAE)	m <sup>3</sup>	4.2	4.8	5.4	5.7
Tipping load (straight / full turn at 40°)	kg	18300 / 16155	20515 / 18115	26244 / 22905	29690 / 26220
Max. dump height on pivot	mm	4280	4500	4795	4780
Breakout force	kN	210	231	247	225
Maximum speed	km/h	38	37	37	37
Turning radius at bucket	mm	6570	7160	7565	7544
Tyres	-	26,5 R25	26,5 R25	29,5 R25	29,5 R25
Length	mm	8910	9155	9870	10150
Width	mm	3270	2985	3180	3170
Height	mm	3535	3583	3785	3785

# Articulated Dump Trucks



➤ DA30



Maximum payload	kg	28000
Maximum power (ISO 3046)	kW @ rpm	276 @ 2100
Body capacity heaped (without / with tailgate)	m <sup>3</sup>	16.8 / 17.8



➤ DA40



40000
368 @ 2100
24.4 / 26.0

## ➤ Articulated Dump Trucks

	Unit	DA30	DA40
Speeds - forward	km/h	6 - 8 - 11 - 16 - 23 - 32 - 45 - 55	6 - 9 - 12 - 17 - 24 - 34 - 48 - 55
Speeds - reverse	km/h	6 - 8 - 11 - 16	6 - 9 - 12 - 17
Engine model	-	Scania DC9	Scania DC13
Power	kW @ rpm	276 @ 2100	368 @ 2100
Transmission model	-	ZF 8 EP320	ZF 8 EP420
Weight empty front / rear axle	kg	11900 / 9800	14200 / 15800
Weight loaded front / rear axle	kg	15400 / 34300	21700 / 48300
Net weight	kg	21700	30000
Length	mm	9534	10590
Width	mm	2967	3475
Total height	mm	3560	3850

# Attachments

## ➤ Do it all !

Range of Doosan Buckets, Breakers, Quick Couplers, Pallet Forks and more...  
For: Doosan wheel loaders, crawler and wheeled excavators.



# Special Applications

## ➤ Do even more !

- 3 SLR and 1 Semi-SLR machines: reach from 15.4 to 19.6 m
- 2 HT versions (hight track) available on DX160LC-5 & DX180LC-5

## ➤ SLR and Semi-SLR

	Unit	DX225LC-5 SLR	DX300LC-5 SLR	DX530LC-5 Semi-SLR	DX530LC-5 SLR
Operating weight	kg	23900	33300	51100	51500
Bucket capacity (SAE)	m <sup>3</sup>	0.39	0.64	1.27	0.92
Travel speed	km/h	3.0 - 5.5	3.0 - 5.5	3.1 - 5.4	3.1 - 5.4
Engine model	-	Doosan DLo6P	Doosan DLo8P	Scania DC13	Scania DC13
Power	hp / kW @ rpm	167 / 124 @ 1800	271 / 202 @ 1800	380 / 283 @ 1800	380 / 283 @ 1800
Digging reach	mm	15380	17510	16060	19615
Digging depth	mm	11650	13780	11795	15125
Digging height	mm	13075	14195	12755	14435
Length	mm	12365	14320	14155	16195
Width	mm	2990	3400	3340 - 3900	3340 - 3900
Height	mm	3275	3475	3910	4070



## ➤ High Track

	Unit	DX160LC-5 HT	DX180LC-5 HT
Operating weight	kg	16800	18500
Bucket capacity (SAE)	m <sup>3</sup>	0.45	0.70
Travel speed	km/h	2.2 - 3.7	3.1 - 5.1
Engine model	-	PERKINS 1204F	PERKINS 1204F
Power	hp / kW @ rpm	109 / 81.6 @ 2000	127 / 94.9 @ 2000
Digging reach	mm	8665	9190
Digging depth	mm	5850	5955
Digging height	mm	9025	9325
Length	mm	7650	8720
Width	mm	2800	2900
Height	mm	3065	3080



Now showing at: [products.doosanequipment.eu](http://products.doosanequipment.eu)  
[www.doosanequipment.eu](http://www.doosanequipment.eu)

***DOOSAN***