

**HUSTLER**



# WHY HUSTLER® IS A BETTER MOWER



## SMOOTHTRAK™ STEERING

Glide around obstacles and make zero-radius turns with ease.



## PATENTED PARK BRAKE

Never forget the brake again with automatic parking system.



## TOUGH FRAMES

Spend less on maintenance with our unmatched durability.



## SIMPLE DESIGN

Enjoy peace of mind because fewer parts means fewer problems.



## HEAVY-DUTY DECKS

Finish your yard like a professional with consistent cuts and even clippings distribution.



## LOW CENTER OF GRAVITY

Stay balanced with superior handling and stability.



## HUSTLER – IMPROVING LIFE & LAWN CARE

In 1964, Hustler put professional-quality mowing equipment into the hands of everyday Americans with the world's first zero-turn mower. With the power to tackle their own lawns in record time with unparalleled precision, people could spend their time doing more of what they loved. What was true in 1964 is still true today. Hustler's easy-to-handle, time-saving innovations revolutionized the mower industry more than 50 years ago, and we've been improving life and lawn care ever since.

# RESIDENTIAL MOWERS

## MAKE TIME TO DO THE THINGS YOU LOVE

Don't waste time with obstacles in your yard. Just go around them with Hustler's highly maneuverable residential mowers, built strong to exceed your expectations. Our precision performance helps you finish work faster so you can make time instead of losing it.

### RESIDENTIAL MOWERS

#### DASH

NEW!

- 🏠 Small yard zero-turn ideal for up to ¾ acre yards.
- 🗑️ Minimal storage space required. Easily fits thru most gates.

#### RAPTOR

- 🏠 Ideal for yards up to one acre.
- ✔️ Classic Hustler features, plus new foot-operated deck lift.

#### RAPTOR LIMITED

- 🏠 Ideal for yards up to one acre.
- ✔️ Classic Hustler features, plus enhanced-ride experience.

#### RAPTOR FLIP UP

- 🏠 Ideal for yards up to three acres.
- ✔️ Classic Hustler features, plus push-button deck lift and height adjustment.

#### RAPTOR SD

- 🏠 Ideal for yards up to three acres.
- ✔️ Classic Hustler features, plus deck sizes up to 60" and large 20" drive tires.

#### RAPTOR SDX

NEW!

- 🏠 Ideal for yards up to three acres.
- ⚙️ Commercial-grade Hustler features including 22" Big Bite drive tires, 10-gauge deck, heavy duty transmission.

#### FASTRAK

- 🏠 Ideal for residential estates over three acres.
- ⚙️ Commercial-grade Hustler features including tubular frame, ROPS, full suspension seat.



See them in action!

visit [www.hustlerturf.com](http://www.hustlerturf.com) for videos, reviews, specs.

# INTRODUCING THE DASH

IDEAL FOR UP TO  
**3/4**  
ACRE

LIMITED WARRANTY  
**2** YEAR  
NO HOUR LIMIT  
RESIDENTIAL



## Now Any Yard Can Experience The Benefits Of A Hustler Zero-Turn!

### Experience the Dash

If you've got grass that grows, now you can get a Hustler that mows, even in a small yard. The new Hustler Dash enables homeowners with a ¾-acre yard or less to experience the speed and precision of a zero-turn mower. Choose from two welded-steel deck sizes (34" or 42") and still fit the Dash through most backyard gates. Plus its compact size makes it easy to store just about anywhere, from garages to sheds. Featuring Hustler's patented automatic park brake and a convenient foot-operated deck lift, the Dash mows zero-turn circles around traditional lawn tractors. Find out how the Dash can change your yard today.



Drive through gates to mow your backyard.



Store nearly anywhere with its compact size.



Lift the deck easily with foot-operated mechanism.



Effortlessly outmaneuver a lawn tractor.

# RAPTOR

High Performance Zero-Turn  
At A Great Value



IDEAL FOR UP TO  
**ONE  
ACRE**

# RAPTOR LIMITED

Premium Performance,  
Premium Comfort



IDEAL FOR UP TO  
**ONE  
ACRE**



### 36", 42", & 52" Decks

Mow tough terrain with heavy-duty, welded steel decks.

### Get Comfortable

Enjoy the ride with built-in lumbar support and natural air flow.



### 42"& 52" Decks

Mow tough terrain with heavy-duty, welded steel decks.

### 20" High-Back Seat

Industrial frame, armrests and bolstered for better side-to-side support.



### Powerful Engine Options

Maximum performance with Kawasaki or Kohler engines.

### Foot-Operated Deck Height

Easy, hands-free deck height adjustment.



### Hour Meter

Keep track of service intervals.



### Includes Flex Forks®

Enjoy a smooth ride with a cushioned front end.

## SMOOTHTRAK STEERING

Tackle those tight corners and scattered obstacles with Hustler's ultra smooth and precise steering system. Test drive a Hustler today to experience what makes it the best.

## Raptor & Raptor Limited

Take your lawn from ragged to remarkable with the Raptor® and Raptor® Limited from Hustler®. Both machines are built with welded-steel decks and frames. Combine that with Hustler's exclusive SmoothTrak™ steering and our patented park brake system, which engages automatically, and you'll wonder why you ever tried to mow your lawn any other way.

LIMITED WARRANTY  
**3** YEAR | **NO** HOUR LIMIT  
RESIDENTIAL



## QuickFlip TECHNOLOGY

Clean and change your mower blades effortlessly and adjust the cutting height of the deck with a simple push of a button.



## RAPTOR FLIP-UP

Cleaning, sharpening, or changing your mower blades was never so easy, thanks to the Raptor® Flip-Up, the only mower on the market with patent pending QuickFlip™ Technology. Plus, if you need to adjust the deck height or access the deck underside, all you have to do is push a button.

IDEAL FOR UP TO  
**3**  
ACRES



LIMITED WARRANTY  
**4** YEAR  
**400** HOUR  
RESIDENTIAL



### 48" & 54" Decks

Mow tough terrain with heavy-duty, welded steel decks.



### 20" High-Back Seat

Industrial frame, armrests and bolstered for better side-to-side support.



### Push Button Deck Lift

Get easy access to the mower blades.



### Automated Deck Height Adjustment

Raise or lower the deck with ease.

## RAPTOR SD

Make small work out of bigger yards with the Raptor® SD mower. With large drive tires and Hustler's exclusive SmoothTrak™ steering, you can navigate smoothly even over rugged terrain, regardless of the turf conditions.

IDEAL FOR UP TO  
**3**  
ACRES



LIMITED WARRANTY  
**3** YEAR  
**300** HOUR  
RESIDENTIAL



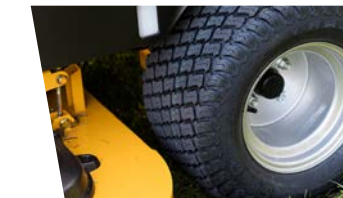
### Up to 60" Deck Sizes

Mow tough terrain with 11ga. heavy-duty, welded-steel decks.



### 20" High-Back Seat

Industrial frame, armrests and bolstered for better side-to-side support.



### 20" Drive Tires

Cross uneven lawns in comfort thanks to large drive tires.



### Up To 7.5 mph Speed

Finish mowing quickly.

# RAPTOR SDX

For the biggest yards, check out the Raptor® SDX, a residential mower with commercial-grade features. Tough construction makes it sturdy to give you support in various turf conditions, and big, gripping tires help you make progress even in the most difficult terrain.

IDEAL FOR UP TO  
**3 ACRES**



LIMITED WARRANTY  
**3 YEAR 300 HOUR**  
RESIDENTIAL

LIMITED WARRANTY  
**1 YEAR 300 HOUR**  
COMMERCIAL



### 48", 54" & 60" Decks

10ga. welded steel deck built tough to work hard, so your job is easy.

### Premium Seat

Bolstered adjustable premium seat with armrests and internal suspension.



### Commercial Transmission

Run harder, longer with commercial-grade transmission.



### 22" Big Bite Drive Tires

Get a grip with aggressive tires for difficult turf conditions.

## SUPER TOUGH FRAMES & DECKS

*Finish your yardwork with confidence with heavy-duty frames and decks that offer additional strength and durability for rugged terrain.*



# FASTRAK

If you've got a yard with tough terrain and demanding conditions, then the FasTrak® is the mower you need to make your job easier. Engineered for bigger yards, the FasTrak outperforms everybody's expectations.

IDEAL FOR  
**3+ ACRES**



LIMITED WARRANTY  
**4 YEAR 400 HOUR**



### Fully Welded, Tubular Frame

Never worry about working in tough conditions.



### 20" High-Back Seat

Full suspension and EVC cushion to take the pressure off your tail bone and lower back.



### 22" Drive Tires

Large drive tires provide a smoother ride experience.



### R.O.P.S.

Roll-over protection system included.

	DASH	RAPTOR	RAPTOR LIMITED	RAPTOR SD	RAPTOR SDX	RAPTOR FLIP-UP	FASTRAK	
<b>CUTTING WIDTHS</b>	34" & 42" Side-discharge	36", 42" & 52" Side-discharge	42" & 52" Side-discharge	36", 42", 48", 54" & 60" Side-discharge	48", 54" & 60" Side-discharge	48" & 54" Side-discharge	48", 54" & 60" Side-discharge 48" & 54" Rear-discharge	
<b>ENGINE CONFIGURATIONS</b>	<b>Briggs &amp; Stratton</b> PowerBuilt™ 10.5hp	<b>Kohler</b> 6600 Series HD 19hp 7000 Series HD 22hp & 24hp <b>Kawasaki</b> FR541 15hp FR600 18hp FR691 23hp	<b>Kawasaki</b> FR651 21.5hp FR691 23hp	<b>Kohler</b> 7000 Series PRO 22hp, 25hp & 26hp <b>Kawasaki</b> FR651 21.5hp FR691 23hp FR730 24hp	<b>Kawasaki</b> FR691 23hp FR730 24hp	<b>Kawasaki</b> FR691 23hp	<b>Kawasaki</b> FR691 23hp FR730 24hp <b>Kohler</b> 7500 27hp EFI	
<b>DECK HEIGHT</b>	Foot-operated. 1.5" to 4.5" (1/2" increments)	Foot-operated. 1.5" to 4.5" (1/2" increments)	Foot-operated. 1.5" to 4.5" (1/2" increments)	Foot-operated. 1.5" to 4.5" (1/4" increments)	Foot-operated. 1.5" to 4.5" (1/2" increments)	Electric/Hydraulic. 1.5" to 4.5" (1/2" increments)	Foot-operated. 1.5" to 4.5" (1/4" increments)	
<b>DRIVE SYSTEM</b>	Hydro-Gear ZT1800	<b>36/42"</b> : Hydro-Gear ZT2100 <b>52"</b> : Hydro-Gear ZT2200	Hydro-Gear EZT	Hydro-Gear ZT2800. Serviceable w/ spin-on filters.	Hydro-Gear ZT3100. Serviceable w/ spin-on filters.	Hydro-Gear ZT2800. Serviceable w/ spin-on filters.	Commercial-duty Hydro-Gear ZT3100. Serviceable w/ spin-on filters.	
<b>SPEED (FWD)</b>	Up to 5 mph	Up to 6.5 mph	Up to 6.5 mph	Up to 7.5 mph	Up to 7 mph	Up to 7 mph	Up to 8 mph	
<b>FUEL CAPACITY</b>	2.8 quarts	3 US gallons	3 US gallons	3 US gallons	3 US gallons	3 US gallons	5 US gallons	
<b>CASTER TIRES</b>	11" x 4"	11" x 4"	11" x 5"	<b>36/42/48"</b> : 13" x 5" <b>54/60"</b> : 13" x 6.5"	<b>48"</b> : 13" x 5" <b>54/60"</b> : 13" x 6.5"	11" pneumatic	<b>48"</b> : 13" x 5" <b>54/60"</b> : 13" x 6.5"	
<b>DRIVE TIRES</b>	16" x 6.5"	<b>36"</b> : 18" x 7" <b>42/52"</b> : 18" x 8.5"	<b>42"</b> : 18" x 8.5" <b>52"</b> : 18" x 10.5"	<b>36/42"</b> : 20" x 6.5" <b>54/60"</b> : 20" x 12" <b>48"</b> : 20" x 8"	22" x 11"	<b>48"</b> : 20" x 8" <b>54"</b> : 20" x 10"	<b>48"</b> : 22" x 9.5" <b>54/60"</b> : 22" x 11"	
<b>LIMITED WARRANTY</b>	2 Year (Residential only)	3 Year (Residential only)	3 Year (Residential only)	3 Year / 300 Hour (Residential only)	3 Year / 300 Hour (Residential) 1 Year / 300 Hour (Commercial)	4 Year / 400 Hour (Residential only)	4 Year / 400 Hour (Residential and Commercial)	
See dealer for complete details.							<b>LIMITED LIFETIME WARRANTY</b> FRAME & LEADING EDGE OF DECK	



## COMMERCIAL MOWERS

# GOING THE EXTRA YARD

You work hard, so you need a mower that works harder. Hustler's commercial mowers balance strength, speed, and reliability with comfort and convenience. You go the extra yard for your customers, and we'll do the same for you.



Visit [hustlerturf.com/find-a-retailer](https://hustlerturf.com/find-a-retailer) to locate your nearest dealer.

# FASTRAK SDX



LIMITED WARRANTY

**4** YEAR **1000** HOUR

## HUSTLER'S ENTRY-LEVEL COMMERCIAL MACHINE

Conquer any commercial mowing job with the FasTrak SDX, which provides commercial-grade power and performance at an unbeatable value. The SDX gives you up to a 60" welded-steel deck and a wide front end for strength and stability. Up to 23" rear drive tires give you superior traction in difficult terrain, and its heavy-duty commercial transmission makes quick work of large areas at speeds up to 9 miles per hour. Plus, you can ride in complete comfort with a bolstered internal suspension seat.



### 48", 54" & 60" Decks

10ga. welded steel deck built tough to work hard, so your job is easy.



### Heavy-Duty Frame

Confident, durable performance no matter the conditions.



### SmoothTrak™ Steering

Glide around obstacles with precise, easy motion.

**UP TO 9 MPH**  
TOP SPEED

**5 GAL**  
FUEL CAPACITY

**23"**  
DRIVE TIRES



## REMOTE CANNISTER AIR CLEANER

Keep your engine cooler and healthier with the protection a commercial mower needs to operate at peak efficiency.



## FULL SUSPENSION SEAT

Features an extra high back, an industrial tubular frame, and armrests. Additional bolstering for better side-to-side support, and internal suspension to absorb bumps. Engineered cushions add extra support and protection to relieve pressure on your spine and lower back.



## COMMERCIAL-GRADE TRANSMISSIONS

Built with Hydro-Gear's commercial-grade serviceable transmissions.



# X-ONE



LIMITED WARRANTY  
**2** YEAR | **NO** HOUR LIMIT

OR

LIMITED WARRANTY  
**5** YEAR | **500** HOUR

## BUILT FOR ALL DAY, EVERYDAY PERFORMANCE

The X-ONE® is built for the full-time commercial landscaper to provide all day, everyday performance. It offers a choice of carbureted or fuel-injected engines and a selection of side or rear-discharge decks. And, with an 11.7 gallon gas tank and speeds up to 10.5 miles per hour, you can cover a lot of ground in less time. The X-ONE sets the standard for commercial zero-turn value.



### Side & Rear-Discharge Decks

Welded steel decks in a range of commercial sizes.



### Heavy-Duty Frame

Confident, durable performance no matter the conditions.



### SmoothTrak™ Steering

Glide around obstacles with precise, easy motion.



## INCREDIBLE POWER

Power through with Parker unitized 12cc/rev pumps. Finish fast with a choice of engine sizes.



## UNMATCHED COMFORT

Enjoy the ride with a full suspension seat. Armrests come standard.



## RUBBER BUMPER GUARD

Replaceable wear guards for added protection to the engine and rear of the mower.



**UP TO 10.5 MPH**  
TOP SPEED

**11.7 GAL**  
FUEL CAPACITY

**24"**  
DRIVE TIRES

# SUPER Z

LIMITED WARRANTY  
**2 YEAR NO**  
YEAR HOUR LIMIT

OR

LIMITED WARRANTY  
**5 YEAR 500**  
YEAR HOUR



## RELIABILITY AND PRODUCTIVITY IN ONE SUPER COMBO

Enjoy the extraordinary productivity you can achieve with the Super Z<sup>®</sup> mower. Its acclaimed VX4<sup>®</sup> deck technology cuts and disperses grass more quickly and efficiently regardless of turf conditions. Its suspension seat with armrests increases operator comfort. Plus, at speeds up to 14 miles per hour and an 11.7 gallon fuel tank, you can finish your work rapidly, efficiently, and have fun at the same time.



### Superior Productivity

Heavy-duty hydraulics deliver more power and torque than many other machines.



### Heavy-Duty Performance

Three engine options, large fuel capacity and 14 mph top speed.



### SmoothTrak™ steering

Glide around obstacles with precise, easy motion.



**UP TO 14 MPH**  
TOP SPEED

**11.7 GAL**  
FUEL CAPACITY

**24"**  
DRIVE TIRES

## VX4<sup>®</sup> DECK TECHNOLOGY

*VX4 Deck Technology provides fast, efficient dispersion of grass cuttings and offers a range of benefits for you and your customers:*

### ► Versatility

Optimize deck performance for all grass conditions and seasons with adjustable front inner wall.

### ► Volume

Grass cuttings move through the deck faster and in greater discharges with larger tunnel in front of the blades and a wider discharge opening.

### ► Velocity

Faster ground speed doesn't compromise cut quality with more air and grass volume creating less material carried in the cutting chamber.

### ► Vacuum

Crisp, clean cut and appearance every time with efficient vacuum-powered lifting.

Available on the following mowers:  
Super Z, Super Z HyperDrive,  
Hustler Z Diesel



# SUPER Z HYPERDRIVE

LIMITED WARRANTY  
**3 YEAR NO**  
YEAR HOUR LIMIT

OR

LIMITED WARRANTY  
**5 YEAR 500**  
YEAR HOUR



## POWERHOUSE THAT DELIVERS UNRIVALED PERFORMANCE

Decrease your downtime and increase your productivity with the Super Z® HyperDrive®, featuring Hustler's exclusive HyperDrive transmission system. With the HyperDrive, you also get premium comfort and back support with a Grammer suspension seat with built-in isolator. And at up to 16 miles per hour, this zero-turn mower gets the job done at lightspeed.



### Industry's Best Warranty

Peace of mind with a 5-year/3,000 hour pump and motor warranty.

### Grammer Seat

6-way adjustable premium Grammer suspension seat with smooth-ride isolator.

### VX4® Deck Up To 72"

Engineered for a perfect cut every time.

**UP TO 16 MPH**  
TOP SPEED

**11.7 GAL**  
FUEL CAPACITY

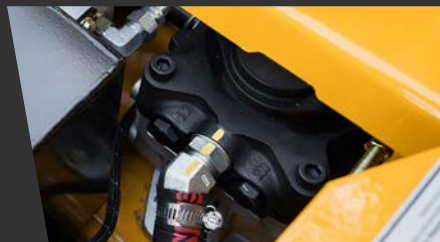
**26"**  
DRIVE TIRES

## HYPERDRIVE SYSTEM

Increase the life and performance of your mower with Hustler's exclusive HyperDrive system, the largest, most durable drive system in the industry. With temperature regulation and heavy-duty components, HyperDrive will keep you operating at peak performance.



9" Fan & High Capacity Oil Cooler with Hot Oil Shuttle



Industrial-Grade Slipper Piston Pumps



Large Oil Reservoir



Heavy-Duty Wheel Motors

**5 YEAR 3000**  
YEAR HOUR **PUMPS AND MOTORS**

THE INDUSTRY'S BEST WARRANTY

# SUPER 104

LIMITED WARRANTY  
**2 YEAR** | **NO**  
YEAR | HOUR LIMIT  
**OR**  
LIMITED WARRANTY  
**5 YEAR** | **500**  
YEAR | HOUR



## 104" WIDTH OF CUT MAKES BIG JOBS EASY

Easily cut and maintain acres of turf with Hustler's Super 104. With a cutting width of 104", zero-turn precision, and up to an impressive 11 mph speed, this machine is in a class by itself. Its industrial-grade HyperDrive® Hydro System is engineered to handle thousands of hours of the toughest jobs out there. When you need to transport it, the Super 104 folds into an 80" transport width, so getting it to your jobsite is easy too. Plus, with a Grammer suspension seat, a welded-steel deck, and a 12-gallon fuel tank, you can enjoy extreme performance in extreme comfort all day long.



**HyperDrive® Hydro System**  
Tackle tough jobs and long days with industrial-grade pumps and motors.



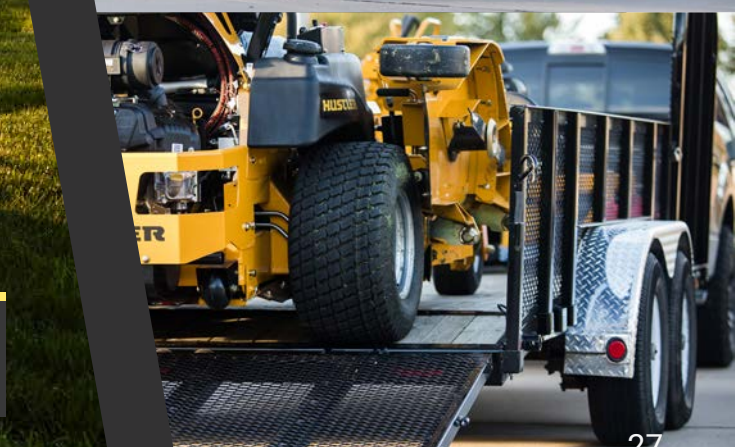
**Hydraulic Deck Height Adjustment**  
Save effort with hydraulically powered deck height adjustments.



**Grammer Suspension Seat**  
Enjoy superior comfort with 6-way adjustable Grammer suspension seat.

## 80" TRANSPORT WIDTH

A wide area mower with an 80" transport width that fits most trailers.



**UP TO 11 MPH**  
TOP SPEED

**12 GAL**  
FUEL CAPACITY

**104"**  
CUTTING WIDTH

# HUSTLER Z DIESEL

LIMITED WARRANTY  
**2 YEAR NO**  
 HOUR LIMIT

OR

LIMITED WARRANTY  
**5 YEAR 500**  
 HOUR



## DIESEL POWER TO DO ANY JOB

Get the job done while increasing your fuel economy with the Hustler® Z Diesel. This machine comes with a powerful 25-horsepower diesel engine for heavy-duty mowing jobs, and it also features Hustler's acclaimed VX4 deck technology to cut and disperse grass clippings efficiently.



**VX4® Deck Technology**  
 Engineered for a perfect cut every time.

**Patented Belt Drive System**  
 Enjoy three times longer belt life.

**Grammer Suspension Seat**  
 6-way adjustable Grammer suspension seat with isolator platform.

**60" & 72"**  
 SIDE & REAR  
 DISCHARGE DECKS

**14.4 GAL**  
 FUEL CAPACITY



**36" 48" 54"**  
 WELDED DECKS

**3.4 GAL**  
 FUEL CAPACITY



# TRIMSTAR

LIMITED WARRANTY  
**2 YEAR NO**  
 HOUR LIMIT



## A WALK BEHIND WITH MAXIMUM STABILITY, EASE-OF-CONTROL

Gain access to the hard-to-reach areas of a lawn with Hustler's TrimStar®, a walk-behind zero-turn mower designed to help reduce operator fatigue. With a wide stance that provides maximum stability and its patented H-Bar® steering, this walk-behind mower is easy to control and fun to operate. Hustler's TrimStar is a perfect addition to any commercial mower fleet.



**SmoothTrak™ Steering**  
 Glide around obstacles with precise, easy motion.

**Ergo-Designed Controls**  
 Reduce operator fatigue with patented H-bar steering.

**Compact Stance**  
 Maneuver in tight spaces with ease.

# SUPER S



LIMITED WARRANTY  
**2 YEAR NO**  
HOUR LIMIT

OR

LIMITED WARRANTY  
**5 YEAR 500**  
HOUR

## A STAND-ON WITH EXCEPTIONAL OPERATOR COMFORT, CONTROL AND MANEUVERABILITY

Maneuver around obstacles like the professional you are with Hustler's Super S model, which features superior operator comfort and positioning, operator-friendly controls, and a compact stance that makes navigating tight spaces easy. It's the perfect choice for highly landscaped properties or any landscape where maneuverability is a top priority. Its smaller footprint also allows for more mowers to fit on a trailer or in a storage area.



### Powerful Engine Options

Choose from Kawasaki or Kohler engines.

### Large Fuel Capacity

Mow longer with 6.5 or 7.3 gallon fuel capacity.

### Heavy-Duty Frame

Work with confidence in the unmatched durability of our fabricated frames.

**36" 48" 52" 60"**  
WELDED DECKS

**UP TO 7.3 GAL**  
FUEL CAPACITY

**UP TO 9 MPH**  
TOP SPEED

## SMOOTHTRAK STEERING

*Glide around obstacles with precise, easy motion.*



## COMPACT STANCE

*Perfect for tight spaces and for trailering from job-to-job.*



## OPERATOR COMFORT

*Features exceptional operator positioning for all-day comfort.*





**FASTRAK SDX**

**X-ONE**

**SUPER Z**

**SUPER Z HYPERDRIVE**

**SUPER 104**

**HUSTLER Z DIESEL**

**TRIMSTAR**

**SUPER S**

<b>CUTTING WIDTHS</b>	48", 54" & 60" Side-discharge	52", 60" & 72" Side-discharge 54" & 60" Rear-discharge	54", 60", 66" & 72" Side-discharge 60" & 72" Rear-discharge	60", 66" & 72" Side-discharge 60" & 72" Rear-discharge	104" Rear-discharge	60" & 72" Side-discharge 60" & 72" Rear-discharge	36", 48" & 54" Side-discharge	36", 48", 52", & 60" Side-discharge
<b>ENGINE CONFIGURATIONS</b>	<b>Kawasaki</b> 22hp FX691 23.5hp FX730	<b>Kawasaki</b> 23.5hp FX730 27hp FX850 <b>Kohler</b> 25hp Command Pro 724 29hp Command Pro 824 EFI	<b>Kawasaki</b> 27hp FX850 35hp FX1000 <b>Kohler</b> 33hp 824 EFI	<b>Vanguard</b> 36hp Big Block 37hp Big Block EFI	<b>Vanguard</b> 36hp Big Block 37hp Big Block EFI	<b>Shibaura</b> 25hp Shibaura Tier 4	<b>Kawasaki</b> 14.5hp FS481 15hp FS541 18.5hp FS600 23hp FS691 (electric start)	<b>Kawasaki</b> 15hp FS541V 22hp FX691V 23.5hp FX730V <b>Kohler</b> 23hp ECV730 EFI 25hp ECV740 EFI
<b>DECK HEIGHT</b>	Foot-operated. 1.5" to 4.5" (1/4" increments)	Foot-operated. 1" to 5.5" (1/4" increments)	Foot-operated. 1" to 5.5" (1/4" increments)	Foot-operated. 1" to 5.5" (1/4" increments)	Hydraulic. 1" to 5.5"(1/4" increments)	Foot-operated. 1" to 5.5"(1/4" increments)	Hand-operated. 1.5" to 4.5" (1/4" increments)	Hand-operated. 1.5" to 5.5" (1/4" increments)
<b>DRIVE SYSTEM</b>	Commercial-duty Hydro-Gear ZT3400 Serviceable w/ spin-on filters.	Parker unitized 12cc/rev pump 15.9ci/rev wheel motors.	Hydro-Gear 21cc pumps, Parker TG high torque wheel motors, 3 gal. reservoir, oil cooler w/ fan & hot oil shuttle.	HyperDrive industrial Danfoss slipper piston pumps, Parker TG high torque wheel motors, 3 gal. reservoir, oil cooler w/ 9" fan & hot oil shuttle.	HyperDrive industrial Danfoss slipper piston pumps, Parker TG high torque wheel motors, 3 gal. reservoir, oil cooler w/ 9" fan & hot oil shuttle.	Hydro-Gear tandem 21cc pumps and Parker TG0335 wheel motors, 1.3 gallon reservoir, oil cooler with 8" fan.	Hydro-Gear ZT2800 w/ spin-on filters.	<b>36"</b> : Hydro-Gear 10cc pump and Parker TL0195 wheel motor. <b>48/52/60"</b> : Hydro-Gear 12cc pump and Parker TL0240 wheel motor.
<b>SPEED (FWD)</b>	Up to 9 mph	Up to 10.5 mph	Up to 14 mph	Up to 16 mph	Up to 11 mph	Up to 11.5 mph	Up to 6.3 mph	<b>36"</b> : Up to 8 mph <b>48/52/60"</b> : Up to 9 mph
<b>FUEL CAPACITY</b>	5 US gallons	11.7 US gallons	11.7 US gallons	11.7 US gallons	12 US gallons	14.4 US gallons	3.4 US gallons	<b>36"</b> : 6.5 US gal. <b>48/52/60"</b> : 7.3 US gal.
<b>CASTER TIRES</b>	<b>48"</b> : 13" x 5" <b>54/60"</b> : 13" x 6.5"	13" x 6.5"	13" x 6.5"	13" x 6.5"	15" x 6"	13" x 6.5"	11" x 4"	<b>36"</b> : 11" x 4" <b>48/52/60"</b> : 13" x 5"
<b>DRIVE TIRES</b>	<b>48"</b> : 22" x 9.5" <b>54/60"</b> : 23" x 11"	<b>52"/54"RD</b> : 24" x 9.5" <b>60"/60"RD/72"</b> : 24" x 12"	<b>54"</b> : 24" x 9.5" <b>60/60RD/66/72/72"RD</b> : 24" x 12"	26" x 12"	26" x 12"	24" x 12"	<b>36"</b> : 18" x 6.5" <b>48/54"</b> : 20" x 10"	<b>36"</b> : 18" x 8.5" <b>48/52"</b> : 20" x 10" <b>60"</b> : 20" x 12"

<b>ORIGINAL LIMITED WARRANTY</b>	4 Year 1000 Hour	5 Year 500 Hour 2 Year No Hour Limit	5 Year 500 Hour 2 Year No Hour Limit	5 Year 500 Hour 3 Year No Hour Limit	5 Year 500 Hour 2 Year No Hour Limit	5 Year 500 Hour 2 Year No Hour Limit	2 Year No Hour Limit	5 Year 500 Hour 2 Year No Hour Limit
----------------------------------	------------------	---	---	---	---	---	----------------------	---

See dealer for complete details.	<p>← LIMITED <b>LIFETIME WARRANTY</b> FRAME &amp; LEADING EDGE OF DECK →</p>				<p>LIMITED <b>LIFETIME WARRANTY</b> ON THE FRAME</p>	<p>LIMITED <b>LIFETIME WARRANTY</b> FRAME &amp; LEADING EDGE OF THE DECK</p>	<p>LIMITED <b>LIFETIME WARRANTY</b> LEADING EDGE OF THE DECK</p>	
----------------------------------	--	--	--	--	--	--	--	--

# GRASS BAGGERS

Enhance your mower with a bagger system to make your lawncare even more easy.



## NON-POWERED BAGGER

Easy-on, easy-off hopper assemblies. The bagger holds 5.4 bushels. Available on all Raptor family mowers.



## SIDE BAGGER

Easy-on, easy-off bagger has a 3.5-bushel capacity. Available on FasTrak, FasTrak SDX, X-ONE, and Super S.



## SIDE BAGGER

Easy-on, easy-off bagger has a 3-bushel capacity. Available on X-ONE, Super S, and TrimStar.



## 2-BAG POWERED BAGGER

Easy-on, easy-off hopper assemblies. Holds 7.2 bushels. Available on FasTrak and FasTrak SDX.



## 3-BAG POWERED BAGGER

Easy-on, easy-off hopper assemblies. Holds 12 bushels. Available on X-ONE, Super Z, and HyperDrive.



## BACVAC

Electric accuated DFS bagger system. Easy-on, easy-off versatility with a 10-bushel capacity. Available on X-ONE, Super Z, and HyperDrive.



Visit [hustlerturf.com](http://hustlerturf.com)

for a complete listing and visuals of all attachments.

# MOWER ACCESSORIES

With a Hustler mower, you've already got the best, but thanks to our extensive assortment of mower accessories, the best can still get better.



## FLEX FORKS®

Improves operator comfort and provides a more even cut, especially over uneven terrain or at higher speeds.



## MULCH KIT

Recycles clippings back into the soil to reclaim nutrients for your lawn.



## STEERING EXTENSION KIT

Allows height adjustment of steering levers to make your mowing experience as comfortable as possible.



## SEAT ISOLATOR

Provides comfort in the roughest mowing conditions.



## ENGINE GUARD

Provides protection for the engine and adds to the great look of the machine.



## STRIPE KIT

Helps provide a professional, manicured finish to your lawn. Depending on the mower, rubber flap or steel cylinder options are available.



## ARMREST KIT

Provides more comfort while you mow.



## SEMI-PNEUMATIC TIRES

Better protection against flat tires.



## HOUR METER

Helps keep track of service intervals.



## LIGHT KIT

Extends your productivity into the late hours. Kit contains two high-quality 12-volt lights with a switch that mounts in the instrument panel.



Visit [hustlerturf.com](http://hustlerturf.com) for a complete listing and visuals of all attachments.

**TEST DRIVE A MOWER TODAY!**  
 Visit [hustlerturf.com/find-a-retailer](http://hustlerturf.com/find-a-retailer) to locate your nearest Hustler dealer.



# PRESSURE WASHERS

Now Hustler® is bringing the same power and innovation to the world of pressure washing. With top quality products that meet the demands of the toughest jobs, Hustler pressure washers are strong, durable machines that provide a superior cleaning experience.

## AVAILABLE MODELS

- ▶ HH3324 3300 PSI @ 2.4 GPM
- ▶ HH3725 3700 PSI @ 2.5 GPM
- ▶ HH4035 4000 PSI @ 3.5 GPM
- ▶ HH4240 4200 PSI @ 4.0 GPM
- ▶ HH4440 4400 PSI @ 4.0 GPM



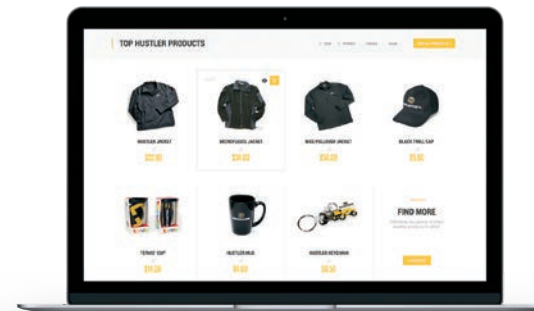
Visit [hustlerturf.com/find-a-retailer](http://hustlerturf.com/find-a-retailer) to locate your nearest dealer.

# HUSTLER FLUID PRODUCTS

Hustler Turf's motor oil, fuel stabilizer and hydrostatic transmission oil products will help keep your machine running smoothly. Ask your local dealer about availability of these products.



Visit [hustlerturf.com/find-a-retailer](http://hustlerturf.com/find-a-retailer) to locate your nearest dealer.



## SHOP AUTHENTIC HUSTLER GEAR

Whether you're outfitting a landscape crew, showing off your Hustler pride, or looking for that perfect gift, we've got you covered.

[HUSTLER-GEAR.HUSTLERTURF.COM](http://HUSTLER-GEAR.HUSTLERTURF.COM)



**HUSTLER®**

©2019 HUSTLER TURF EQUIPMENT

SPECIFICATIONS SUBJECT TO CHANGE WITHOUT NOTICE.  
VISIT [WWW.HUSTLERTURF.COM](http://WWW.HUSTLERTURF.COM) FOR THE MOST CURRENT  
SPECIFICATIONS.

**[HUSTLERTURF.COM](http://HUSTLERTURF.COM)**