

MT 732 / MT 932

TELESCOPIC HANDLERS



MT 732 / MT 932

2 models available



MANITOU A GLOBAL NETWORK

- **1 400 points of sale...**
present in over **120 countries**
- Over 2 000 specialist technicians
- A spare parts distribution centre of 34 000 m²
- **A unique range of handling solutions**
 - Telescopic handlers
 - Masted forklifts trucks
 - Electrical and diesel aerial access platforms
 - Truck mounted forklifts
 - Industrial and semi industrial forklifts
 - Warehouse equipment...

MT 732

7 m / 3.2 T



MT 932

9 m / 3.2 T





MANITOU YOUR HANDLING PARTNER

A global group

The MANITOU group, the global benchmark in handling solutions, designs, assembles and distributes handling solutions in all sectors of activity: industry, construction and agriculture. Capitalising on over 50 year's experience, MANITOU is constantly innovating and guarantees quality products and services, always tailored to reflect the development of your activity.

Products that meet your needs

These MT 732 / 932 telescopic handlers are true allies in your quest for **productivity**. These trucks allow you to carry out the full range of your handling tasks: positioning of pallets at height or in front of the truck, unloading of lorries, loading or unloading of bulk products on storage areas or sites... Whatever the task, with the help of your truck, **you'll go straight to the heart of the matter!**

Your handling partner

In choosing MANITOU, you can count on a quality forklift. You will also benefit from the full range of services offered by your dealer: customer service, care and maintenance contracts, on-site service visits, personalist hire and finance solutions.

With MANITOU, you can rest assured that you are working with a specialized, reliable and passionate partner!



SIMPLICITY

Simple OPERATION and MAINTENANCE

EASY TO USE

Identical controls on both models (JSM, Dashboard).

Permanent 4 wheel drive

Powerful braking applied on both axles.

MANOEUVRABILITY and EASY TO ACCESS

Your telescopic forklift finds its place on restricted spaces. Its all wheels steer and tight turning radius simplify your on-site manoeuvres.

Ultra-short turning radius
3.72 m



3 Steering modes



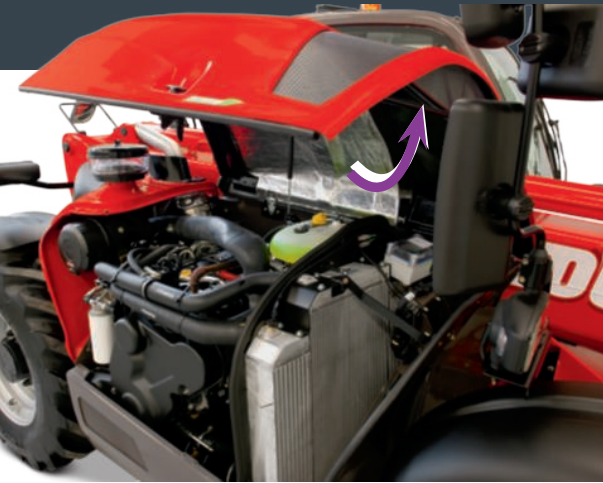
All wheel steer wheels for short turning on restricted sites



2 front driving wheels to guarantee on-road safety



Crabwise movement for lateral approaches and delicate exits



Simplified MAINTENANCE

- All the maintenance is simplified: the engine, transmission, hydraulics, cab, frame - All are sourced from the same design concept.
- Full Access to all filters and components.
- Engine compartment reinforced.



MAINTENANCE and DIAGNOSTICS for the machine

The machine diagnostic and engine display on the dashboard.



PRODUCTIVITY

■ ■ PERFORMANCE and FUEL EFFICIENCY



PRODUCTIVITY and lifting performance

2 lifting heights

7/9 m

1 nominal load capacity

3.2 T

Large working area with maximum outreach

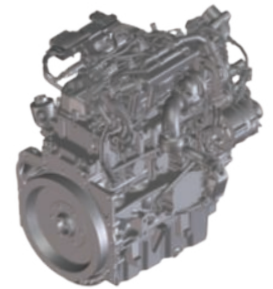
up to **6.58 m** for the MT932

Torque converter transmission

4 speed mechanical gearbox that allows to select the appropriate gear according to the working cycle.

ENGINE specification

Your telescopic truck is equipped with a DEUTZ 3.6l 4 cylinder engine, without particule filters, that meets the Interim Tier 4 / Stage IIIB guidelines and makes use of 101 HP.



High performance cooling systems giving you more power where it's needed and reducing fuel consumption

Available as an option, the fully automatic reversible fan serves to force air through the radiators in the opposite direction to normal cooling and blow out any debris or dust that have accumulated there. This system functions independently from engine rpm and at regular 3 minutes intervals reducing any risk of radiator blockage and subsequent overheating.

This system works in conjunction with a variable speed cooling fan. Several sensors situated in the engine bay send information to the electronic regulation system and adapt the cooling rate to coincide precisely with the cooling requirement. The result is less wasted energy.

Maintenance is reduced to a minimum and engine performance maximized while at the same time significantly reducing work times and fuel consumption.



DRIVING COMFORT

COMFORT and ERGONOMICS at work

The whole driving position offers you a working space which has been ergonomically designed for maximum comfort, with a complete 360° visibility. All the main controls are easily accessible. A selection of standard and optional equipments are available for enhanced comfort and safety of the MT telescopic handlers to satisfy **your daily needs**.

A spacious cab offering you a full visibility

You can work in total safety and optimize your working conditions for greater efficiency and productivity.



Dashboard and ergonomic joystick

The dashboard groups all of the information you need in a logical sequence.

The JSM (Joystick Switch and Move) single lever allows you to operate in complete safety carrying out every movement with one hand:

- raise and lower the boom,
- extend and retract the boom,
- lift and tiltucket,
- hydraulically move the attachments, and also forward and reverse direction control.

You always keep one hand on the steering wheel to totally control your telescopic handler.



Standard equipment	Option equipment
Full cab with heating	Mechanical or pneumatic cloth seat
JSM (Joystick Switch and Move)	CD MP3 car radio with / without bluetooth
Carriage + forks	Air conditioning
Hydraulic line for attachment with fast coupling	Manual hand throttle
Front and rear wiper with windscreen washer	Sun visor on windshield
Battery cut-off	Rear windscreen with de-icing
Aggravating movements cut-off (EN 15000-compliant)	Digicode (anti-theft device)
Full road lighting (front / rear)	Windshield and headlight protection
Rotating beacon	Working lights
Reversing alarm / reverse light	Easy Connect System (E.C.S)
Exterior mirrors left / right Rear view mirror on back of the machine mirror	Fan rotation reversible automatic cleaning of radiator
Cyclonic pre filter	Hydraulic attachment locking
Trailer connection	Continuous flow hydraulics with regulation

Standard and option equipment may vary according to the country.

Your MANITOU telescopic forklift, a **multi purpose** machine...

Your productivity and safety are linked to accessories adapted to forklift performances. Developing our machines permit us to find the attachment that will bring your the best efficiency, but still respecting standards. Choosing a MANITOU attachment is the best choice for your MT!



The universal MANITOU attachment system is easy and simple to use. You can attach / detach your accessories without difficulty.

...for a **multitude of applications**

MANITOU attachments all your on-site needs, optimizing your working time and your forklift's productivity:







Tailor-made finance to **make the best use of your funds**

You can plan the purchase of your forklift with peace of mind by using MANITOU* financing opportunities.

You will have simple solutions adapted to your needs and seasonal requirements. If you want to make a rapid investment, consider asking us for a personalised proposal to take your situation into account.

* MANITOU Finance solutions are available in certain countries.

MANITOU maintenance contract

2 levels of maintenance adapted to your needs.

You are sure of:

- equipment always in good working condition
- a reduction of repair costs as a result of regular servicing
- authentic standardised services

- Labour
- Attendance costs

- Labour
- Attendance costs
- Parts and lubricants



Extension of warranty



With MANIPLUS, you can take out an extension of warranty of 12 or 24 months.

EASY MANAGER

A simple and flexible system for fleet management (with or without geolocation) to provide optimum service from your machines. EASY MANAGER gives you:

- real-time materials management
- simple and easy way of managing your machinery activity and maintenance
- maximise your asset and safeguard your equipment



MANITOU spare parts

Utilising genuine MANITOU spare parts is sure to prolong the best performance capability of your machine. Your MANITOU dealer has access to a stock of 70,000 part numbers, available in 24 hours in Europe (48 hours outside Europe).





TOGETHER, LET'S REDUCE OUR CARBON FOOTPRINT

The material handling sector has not yet got a normalised cycle to measure the trucks' energy consumption. MANITOU Group clearly shows its commitment to transparency by establishing an internal protocol, accessible to all, that can reveal its own measures of consumption (l/h) and CO2 emissions (kg/h). To provide the highest reliability, the data is checked and approved by an independent body, UTAC* specialized in the registration of vehicles and equipment.

SUSTAINABLE SOLUTIONS

To be THE material handling reference is to commit to innovate to offer you safe, efficient and sustainable solutions today and tomorrow.

TEST PROTOCOL

Consumption measurements are performed on four representative activities of a telescopic forklift: handling, bulk loading, idle and road work.



TOGETHER

MANITOU Group would like to accompany you in reducing your trucks fuel consumption to help cut back your carbon footprint.



APPROVED PROCEDURES

To validate processes adopted by the Group in terms of fuel consumption, we wanted to validate our procedures via a recognised external body. Testing conducted by MANITOU according to the EP-695 internal procedure validated by



INFORM

We have developed information and awareness tools (product labels, Ipad simulator ...) to inform you about our trucks' fuel consumption and emissions.



Calculate your fuel consumption:
<http://reduce.MANITOU.com>



*UTAC: Technical Union for the Automobile, Motorcycle and Cycle Industries performs official duty cycles in the automotive sector. UTAC is the only French Technical Service notified to the European Commission and the UNO for fuel consumption.

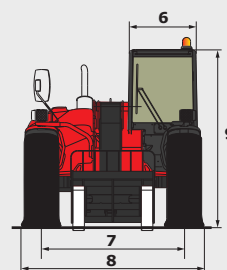
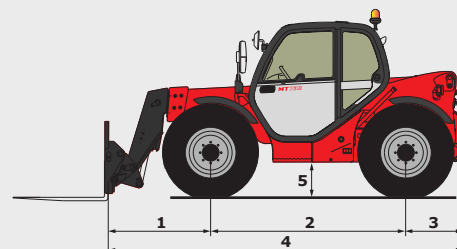
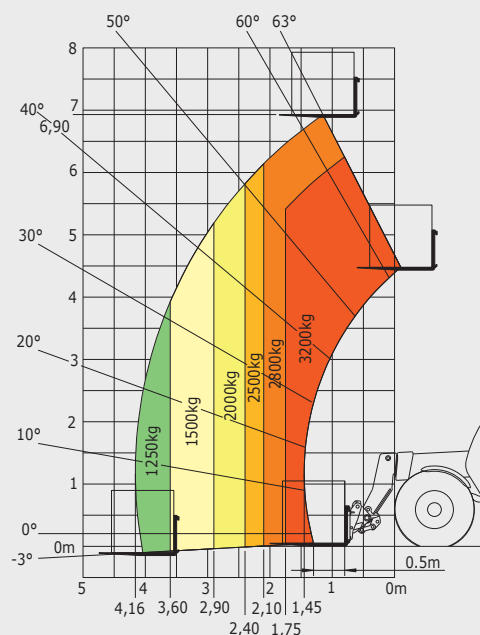
MT 732

MT 732

Lifting	
Max. capacity	3200 kg
Max. lifting height	6.90 m
Max. outreach	4.16 m
Break-out force with bucket (ISO 8313)	5770 daN
Time unladen	
Lifting	6.8
Lowering	5.8
Extension	6.8
Retraction	4.7
Crowd	3
Dump	2.9
Tyres	400/80-24
Braking	
Service brake	oil immersed multi-disc braking on front/rear axles
Parking brake	oil immersed multi-disc mechanics on the front axle
Engine	
DEUTZ - STAGE 3B	
Type	TCD 3.6 L
Cubic capacity	3621 cm ³
Power	101 HP/74,4 kW
Max. torque	410 Nm
Injection	electronic
Cooling	water
Laden drawbar pull	8250 daN
Transmission	
torque converter	
Reversing shift	electrohydraulic control
Number of gears (forward/reverse)	4/4
Max. travel speed (may vary according to applicable regulations)	25 km/h
Steering mode	4 wheel steer - 3 steering modes
Controls	
JSM® Joystick multi-function load limiter cut off system - EN15000 Norm	
Hydraulics	
Pump	gear type with priority valve 104 l/min - 260 bar
Capacities	
Hydraulic oil	128 l
Fuel	120 l
Unladen weight (with forks)	7585 kg
Dimensions	
1. Front wheel centre to carriage	1.44 m
2. Wheelbase	2.56 m
3. Rear wheel centre to rear face	0.74 m
4. Overall length to carriage	4.74 m
5. Ground clearance	0.45 m
6. Overall width of cab	0.89 m
7. Inside tyre width	2.05 m
8. Overall width	2.34 m
9. Overall height	2.30 m
Standard forks (length x width x thickness)	1200 x 125 x 45 mm
Turning radius (over tyres)	3.72 m
Carriage rotation (crowd/dump)	13° / 134°
Noise and vibration	
Noise at driving position (LpA)	78 dB
Environmental noise (LwA)	106 dB
Vibration to whole hand/arm	<2.50 m/s ²

Rough Terrain Load Chart standard EN1459 B

Machine on tyres with forks



MT932

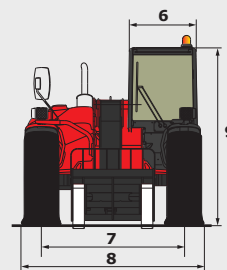
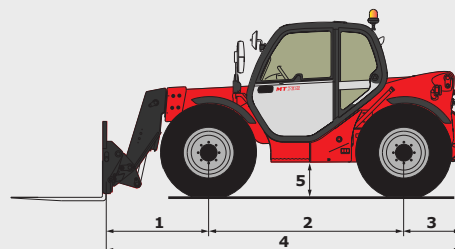
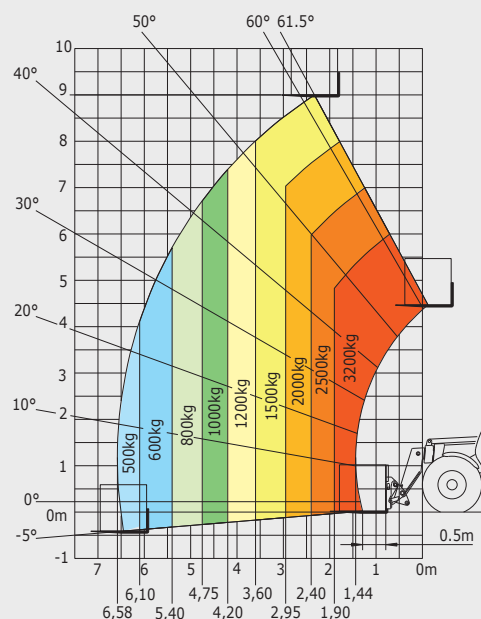
MT 932

Lifting	
Max. capacity	3200 kg
Max. lifting height	9 m
Max. outreach	6.58 m
Break-out force with bucket (ISO 8313)	5770 daN
Time unladen	
Lifting	8.0
Lowering	5.5
Extension	13.3
Retraction	8.3
Crowd	3
Dump	2.9
Tyres	400/80-24
Braking	
Service brake	oil immersed multi-disc braking on front/rear axles
Parking brake	oil immersed multi-disc mechanics on the front axle
Engine	
DEUTZ - STAGE 3B	
Type	TCD 3.6 L
Cubic capacity	3621 cm ³
Power	101 HP/74,4 kW
Max. torque	410 Nm
Injection	electronic
Cooling	water
Laden drawbar pull	8250 daN
Transmission	
torque converter	
Reversing shift	electrohydraulic control
Number of gears (forward/reverse)	4/4
Max. travel speed (may vary according to applicable regulations)	25 km/h
Steering mode	4 wheel steer - 3 steering modes
Controls	
JSM® Joystick multi-function load limiter cut off system - EN15000 Norm	
Hydraulics	
Pump	gear type with priority valve 104 l/min - 260 bar
Capacities	
Hydraulic oil	128 l
Fuel	120 l
Unladen weight (with forks)	7980 kg
Dimensions	
1. Front wheel centre to carriage	1.37 m
2. Wheelbase	2.56 m
3. Rear wheel centre to rear face	0.74 m
4. Overall length to carriage	4.68 m
5. Ground clearance	0.45 m
6. Overall width of cab	0.89 m
7. Inside tyre width	2.05 m
8. Overall width	2.34 m
9. Overall height	2.30 m
Standard forks (length x width x thickness)	1200 x 125 x 45 mm
Turning radius (over tyres)	3.72 m
Carriage rotation (crowd/dump)	13° / 134°
Noise and vibration	
Noise at driving position (LpA)	78 dB
Environmental noise (LwA)	106 dB
Vibration to whole hand/arm	<2.50 m/s ²

Rough Terrain Load Chart

standard EN1459 B

Machine on tyres with forks



Your nearest **MANITOU** dealer:



Head office:
B.P. 249 - 430 rue de l'Aubinière - 44158 Ancenis Cedex - France
Tel: 00 33 (0)2 40 09 10 11 - Fax: 00 33 (0)2 40 09 10 97
www.manitou.com