

Technical sheet :

# **200 ATJ**

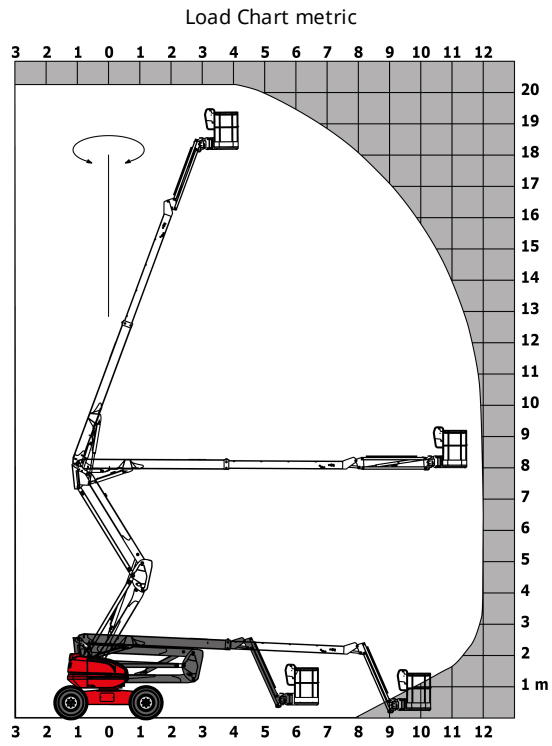
---



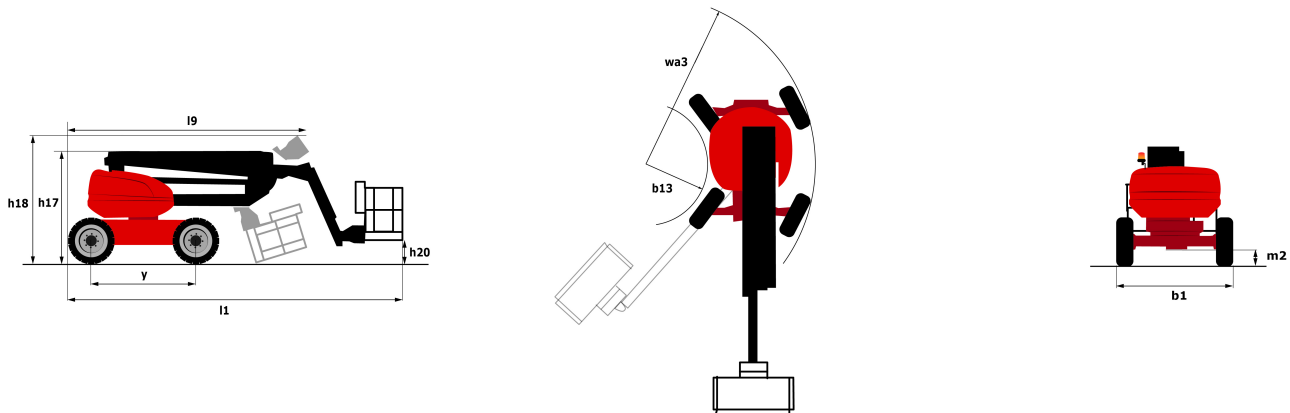
| Capacities                              |         | Metric   |
|---|---------|--|
| Working height                          | h21     | 20.36 m  |
| Platform height                         | h7      | 18.28 m  |
| Max. outreach                           | r1      | 12 m   |
| Overhang                                | h31     | 8 m  |
| Pendular arm rotation (bottom)          |         | +66 °  |
| Platform capacity                       | Q       | 230 kg   |
| Turret rotation                         |         | 355 °  |
| Platform rotation (right / left)        |         | 90 ° / 90 °  |
| Number of people (inside / outside)     |         | 2 / 2  |
| Weight and dimensions                   |         |  |
| Platform weight*                        |         | 10050 kg   |
| Platform dimensions (length x width)    | lp / ep | 2.1 m x 0.8 m  |
| Overall width                           | b1      | 2.4 m  |
| Overall length                          | l1      | 8.42 m   |
| Overall height                          | h17     | 2.71 m   |
| Overall length (stowed)                 | l9      | 6.21 m   |
| Overall height (stowed)                 | h18     | 2.85 m   |
| Floor height (access)                   | h20     | 18.36 m  |
| Counterweight offset (turret at 90°)    | a7      | 0.11 m   |
| Internal turning radius (over tyres)    | b13     | 1.53 m   |
| External turning radius                 | Wa3     | 4.17 m   |
| Ground clearance at centre of wheelbase | m2      | 0.44 m   |
| Wheelbase                               | y       | 2.4 m  |
| Performances                            |         |  |
| Drive speed - stowed                    |         | 4.7 km/h   |
| Drive speed - raised                    |         | 0.8 km/h   |
| Gradeability                            |         | 40 %   |
| Permissible leveling                    |         | 5 °  |
| Wheels                                  |         |  |
| Tyres type                              |         | Solid Tyres Cured-On   |
| Drive wheels (front / rear)             |         | 2 / 2  |
| Steering wheels (front / rear)          |         | 2 / 2  |
| Braking wheels (front / rear)           |         | 0 / 2  |
| Engine/Battery                          |         |  |
| Engine brand / model                    |         | Kubota - V2403-M   |
| Engine norm                             |         | Stage III A  |
| I.C. Engine power rating / Power (kW)   |         | 45 Hp / 34.1 kW  |
| Miscellaneous                           |         |  |
| Ground Pressure                         |         | 20.65 daN/cm <sup>2</sup>  |
| Hydraulic Pressure                      |         | 335 Bar  |
| Hydraulic tank capacity                 |         | 80 l   |
| Fuel tank                               |         | 78 l   |
| Vibration on hands/arms                 |         | < 2.5 m/s  |
| Daily consumption **                    |         | 7.95 l   |
| Standards compliance                    |         |  |
| This machine is in compliance with:     |         | European directives: 2006/42/EC- Machinery (revised EN280:2013) - 2004/108/EC (EMC) - 2006/95/EC (Low voltage) |

\*\* According to "REDUCE cycle"

# Load chart



## Dimensional drawing



## Equipment

### Standard

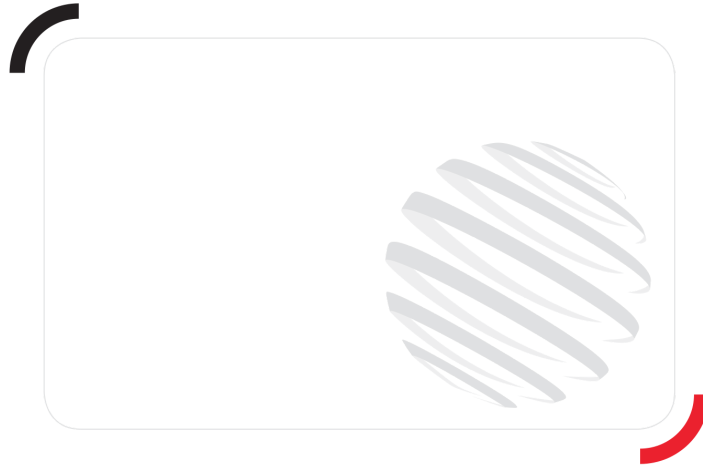
- 230V Predisposition
- 4 simultaneous movements
- 4 wheel drive
- 4 wheel steer with crab mode
- Audible alarm and illuminated indicator lamp (leveling, overload, lowering)
- Backup electrical pump
- CAN bus technology
- Dead man pedal
- Differential locking on rear axle
- Easy Manager
- Emergency stop button in platform and on frame
- Fuel gauge with low level indicator
- Galvanized basket 2,100 mm
- Hour meter
- Management via engine speed bearing
- Oscillating front axle
- Proportional controls
- Rear axle with limited slip differential

### Optional

- 110 or 230V plug with differential circuit breaker
- Air predisposition
- Battery cut-off
- Beep on every movement
- Beep upon travel
- Biodegradable oil
- Catalytic cleaner
- Coded anti-start
- Continuous turret rotation
- Extreme cold oil
- Highly capacity battery
- Onboard generator (3,5 or 5 kW)
- SMS : Safe Man System
- Screen protection on the lower box control
- Spark arrester
- Turret cover with key lock
- Water heater

Optional

Working light



Siège Social  
430 rue de l'Aubinière - 44150 Ancenis Cedex - France  
Tel: +33(0)2 40 09 10 11 - Fax: +33 (0)2 40 09 10 97  
[www.manitou.com](http://www.manitou.com)



This brochure describes versions and configuration options for Manitou products which may be fitted with different equipment. The equipment described in this brochure may be standard, optional or not available depending on version. Manitou reserves the right to change the specifications shown and described at any time and without prior warning. The manufacturer is not liable for the specifications given. For more information, contact your Manitou dealer. Non-contractual document. Product descriptions may differ from actual products. List of specifications is not comprehensive. The logos and visual identity of the company are the property of Manitou and may not be used without authorisation. All rights reserved. The photos and diagrams contained in this brochure are provided for information only.

MANITOU BF SA - Limited company with board of directors - Share capital: 39,668,399 euros - 857 802 508  
RCS Nantes