

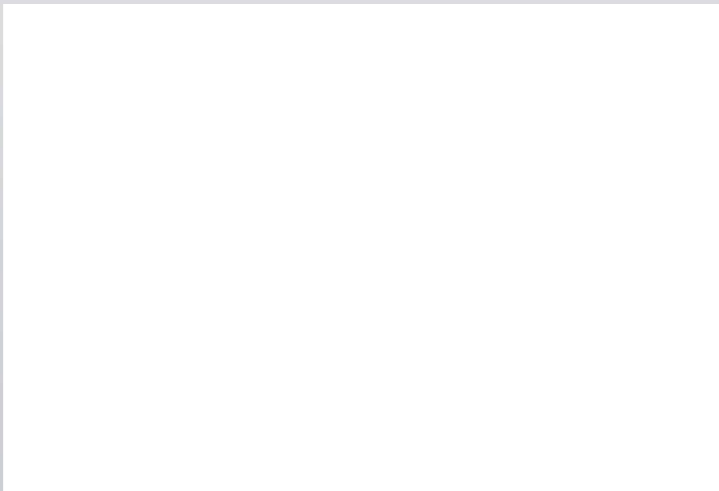


CASTOR R / CASTOR G / CASTORMIX

BALE FEEDER STRAW BLOWER
SILAGE LOADER BALE FEEDER STRAW BLOWER
SILAGE LOADER RECIRCULATING FEEDER STRAW BLOWER

ALL
FODDER

Your LUCAS G. dealer



Lucas G - images d'entreprises - lucas g - Photos, weights and technical specifications are only indicative, not binding.



Head Office
22, Rue du Stade, 85130 La Verrie, France
T : +33 (0)2 51 65 41 36 // F : +33 (0)2 51 65 41 51
lucasg@lucasg.com // www.lucasg.com

YouTube : Lucas G facebook : LucasGFrance

www.lucasg.com





3 ranges – 13 models, 1 ambition: Efficiency

The range of bale feeders and straw blowers Lucas G is composed of 3 families of machines Castor R, Castor G and CastorMix with models from 2 to 18 m³. These machines are equipped with a common bloc (shredders, bed chain, turbine, and comb) which ensures efficiency and meet modern agriculture requirements.

For over 40 years and more than 40 000 bale feeders and straw blowers put into service, Lucas G innovates to make these machines an ally you can rely on. Bearing in mind the importance of animal welfare so they can give higher efficiency, the bale feeders and straw blowers Castor will accompany you day after day, year after year in the execution of these tasks.

Lucas G has based its reputation thanks to its range of bale feeders Castor well-known for its outstanding performance, these machines are able to feed and straw blow all materials, Regardless the length of strands and the percentage of humidity.

Today straw bales and silage bales are becoming increasingly dense and tight, and consequently more difficult to process. The unique design of our shredders combined to the mechanical drives ensures a steady work out put with these new trends of works.

According to the type of livestock, the size of the farm and its configuration, Lucas G has a wide range of bale feeders and straw blowers divided in 3 ranges of products:

CASTOR^R : Bale feeder Straw blowers with loading rear door

CASTOR^G : Silage loader Bale feeder Straw blower with silage claw

CASTORMIX : Recirculating Feeder Straw Blower



CASTOR^R

FEEDER STRAW-BEDDER

ALL FODDER

Loading bale with hydraulic rear door



CASTOR^G

SILAGE LOADER BALE FEEDER STRAW

BLOWER ALL FODDER

Loading and silage loading with hydraulic claw



CASTORMIX

RECIRCULATING FEEDER STRAW BLOWER

ALL FODDER

Mixing through recirculating process and loading with hydraulic claw



The CASTOR block, performance at all levels

The different components of the Castor bloc forms a complementary set guaranteeing optimum straw blowing and distributing performances. Materials are rapidly distributed and processed while respecting the quality of used raw materials.



LUCAS G SKILLS

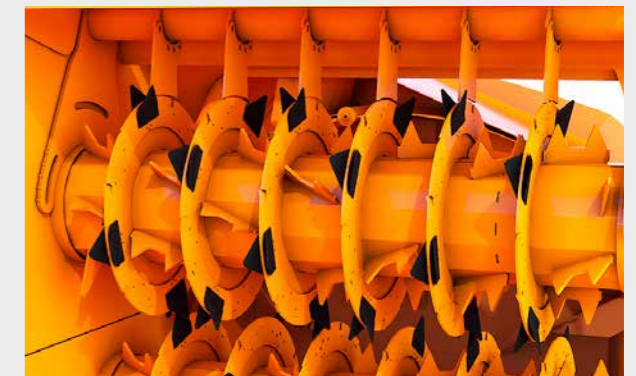
- 1 Shredder:** designed to process all kind of fodder even difficult ones (wet silage) it is fitted with 5 or 7 smooth discs and 48 knives which guarantee a clean cut of products. The paddles located between the discs bring the cut material to the turbine and avoid long strands to wrap around the shredder.
- 2 Hydraulic adjustable comb:** it regulates the flow of material in the turbine. In backward position for processing difficult product, in forward position to adjust the abrasiveness and the flow of straw blowing.

- 3 Two-speed welded turbine:** this piece has been designed in a single block. Equipped with 6 blowing paddles, the material is launched up to 18 m with lateral chute and 15 m with the Universal chute.
- 4 Blowing conduit:** its large width of 33 cm combined with the chute cut-off plate avoid jamming problems linked to the distribution of heavy and wet products.

- 5 Bolt-on bed chain:** hydraulically driven, it has 9 moving speeds from 0 to 20 m/min. The speed is adjusted by the electrical control, the bed chain brings the material to the shredder. It can be moved forward or backward.
- 6 Mechanical drive:** the shredder is mechanically driven through chains equipped with shear bolts. The mechanical drive gives better power for fast bale processing.

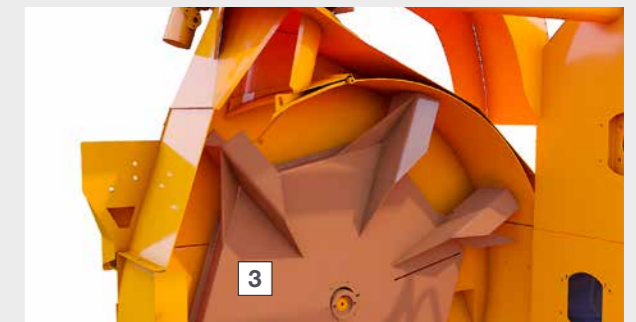
V-SHAPE KNIVES

- Each shredder is equipped with 48 knives positioned in V shape
- Clean cut of the material
- Steady working output with all kind of fodder
- Fast bale processing



CUT-OFF PLATE

- Bevel edge plate located at the exit of the turbine, this piece ensures an exit of the material without jamming
- No jamming with wet material
- Guarantee a steady distribution and straw blowing



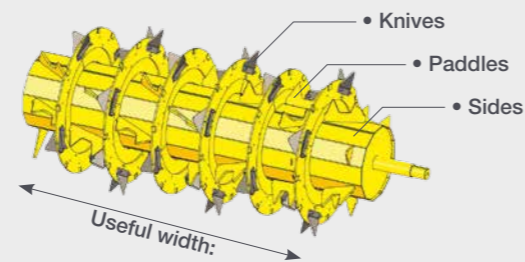


Straw blowing a bale < 3 min.

The range of bale feeders Castor R is composed of seven models from 2 to 18 m³. These straw blowers are equipped with 1, 2 or 3 mechanical shredders, depending on their capacities. The main benefits of these bale feeders are that they have been designed to distribute all type of material, corn silage, grass, alfalfa, regardless the size of strand (short or long) and the degree of humidity.

SHREDDERS

	1 shredder	2 shredders	3 shredders
Useful width (mm):	1400	1400 / 1400	1640 / 1800 / 1800
Diameter (mm):	282 / 12 sides	282 / 282 / 12 sides	282 / 282 / 282 / 12 sides
Paddles	28	28 / 28	24 / 28 / 28
Knives	48	24 / 48	40 / 28 / 56



2 - 3 - 6 m³



6 - 8 m³



12 - 18 m³

The Sprayer

The addition of a sprayer* offers convenience of use while it limits the appearance of dust, adjustable nozzles are located at the flow outlet to prevent clogging of the chute when straw-bedding. It is possible to add soluble additives to the tank to sanitise the straw and guarantee a clean straw bed for the animals.

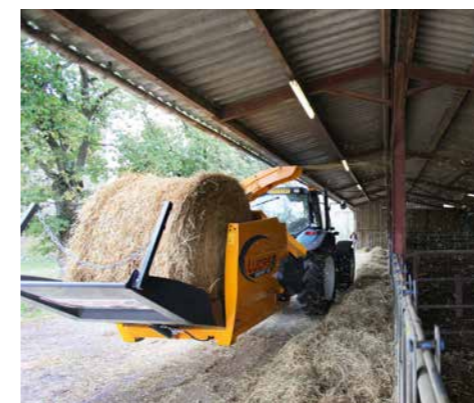
This system works simultaneously as the bed chain advances to avoid unnecessary use when the machinery is not straw-bedding. Located 1m 10 above the ground, filling the tank and maintenance of the filter and pump are easy.

Number of adjustable nozzles	Capacity	Adjustable flow
Universal chute -U: 5	85 L	3,7 L / min (0 L à 7 L / min)
Lateral chute: 4	85 L	3,7 L / min (0 L à 7 L / min)



Steel protective housing

*Option available as a Kit for machines already in service



PERFORMANCE AND CAPACITY – CASTOR R

Castor R	20 R	30 R	60 R	60 R ²	80 R	Polyfeed 12	180 R
Capacity (m ³)	2	3	6		8	12	18
Number of shredders		1			2		3
Round bale Ø 1.60m	1	2	3	2	3	2	3
Round bale Ø 1.80m		1			2		3
Round bale Ø 2m		1			2		3
Square Bale 1.20 x 1.20 x 2.50 m			1			1	2
Square Bale 1.20 x 0.90 x 2.50 m		1			2		4
Square Bale 0.90 x 0.90 x 2 m		1			2		4



The range of silage feeders Castor G is composed of four models from 4 to 8 m³ capacity. These machines are equipped with rounded claw to unload the silage and ensure a simple and clean load of silage, once loaded the distribution is made by the turbine. The silage unloader Castor G can be fitted with a mixing hopper for dry food.



SILAGE LOADING PROCESS

To ensure a perfect silage loading, the feeders straw blowers Castor G are standard equipped with 3 complementary parts:

SILAGE LOADING CLAW

Reinforced by a tubular frame to guarantee an improved life time of the claw. Its rounded design fits perfectly the tank shape for a better seal.

INFERIOR BLADE

Designed for a perfect catch on the silo, it is equipped with a wear blade for improved life time

U-SHAPE REINFORCEMENT

Naturally reinforced thanks to a U frame strengthener , the tank keeps its shape while silage loading applications.



LOADING PROCESS OF BALES



PERFORMANCE AND CAPACITY – CASTOR G

Castor G	45 G	53 G	60 G	80 G
Capacity (m ³)	4.5	5.3	6	8
Number of shredders		1		2
Silage loading height (mm)	3000 mm	3670 mm	3500 mm	
Round bale Ø 1.60m			2	
Round bale Ø 1.80m		1		2
Round bale Ø 2m		0		1
Square Bale 1.20 x 1.20 x 2.50 m			1	
Square Bale 1.20 x 0.90 x 2.50 m			1	
Square Bale 0.90 x 0.90 x 2 m			1	



RECIRCULATING MIXING PROCESS

The recirculating process dispenses to the animals a simple mixed ration to avoid the separation of the silage and the fibre by the cows. Once the machine loaded thanks to the silage claw or the tractor loader, it is sufficient to propel the material into the mixing canopy to make the ration.

The order of loading ingredients is critical to make an homogeneous ration, it is advised to start loading the fibre then the silage.



The range of recirculating mixers feeders and straw bedders Castormix is composed of three models from 6 to 18 m³. The two little models (60 & 80) are equipped with rounded claw to unload the silage. The recirculating mixers Castormix are versatile machines to achieve all feeding applications, the mixing of the ration by recirculating, the distribution of the ration and the straw bedding of livestock buildings with only one tractor. Regardless of the type of materials used for the ration, hay, grass silage, corn silage, alfalfa..... the ration will be prepared efficiently.

PERFORMANCE AND CAPACITY - CASTORMIX

Castormix	60 Mix	80 Mix	180 Mix
Capacity (m ³)	6	8	18
Number of shredders	1	2	3
Equivalent dairy cows	30 - 40	40 - 50	75 - 100
Silage loading height (mm)	3000	3670	no claw
Round bale Ø 1.60m		2	3
Round bale Ø 1.80m		2	3
Round bale Ø 2m		1	3
Square Bale 1.20 x 1.20 x 2.50 m		1	2
Square Bale 1.20 x 0.90 x 2.50 m		1	4
Square Bale 0.90 x 0.90 x 2 m		1	4

COUPLING AVAILABLE ON **CASTOR R** / **CASTOR G** / **CASTORMIX**



ARTICULATED COUPLING

Standard on the major part of the range, the coupling will make the machine follow the wheel of the tractor.



FIXED COUPLING

Standard on machines with capacities over 8 m³, this coupling can be adjusted up and down on 3 positions.

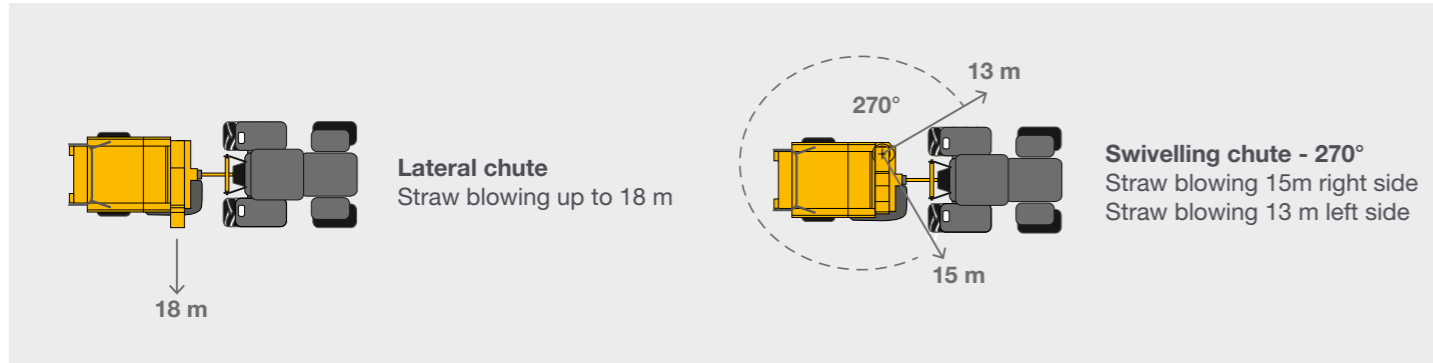


3 POINTS COUPLING

This hitching is used on mounted machines – Castor 20 R

Straw Blowing, distribution and controls

STRAW BLOWING PERFORMANCE



PERFORMANCE OF DISTRIBUTION WITH THE UNIVERSAL CHUTE



Electric Control as Standard*



*Except Castor 180 R & Polyfeed 12 – Manual control as standard

systemX

WEIGHING SYSTEM

To measure the costs of the distributed rations, the bale feeder Castor R – G & Mix can be fitted* with a weighing system. The device will give depending on the chosen model to weigh ingredients, know the quantities distributed and adapt easily the fluctuation in number of animals. A system of tare or skipping ingredients remotely is also available.



*Except Castor 20 R 45 G & 53 G & Polyfeed 12

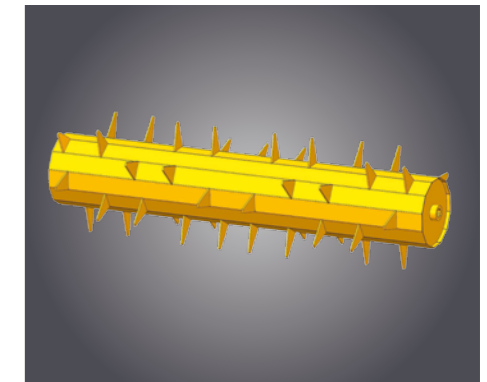
A SELECTION OF OPTIONS



Swivelling chute - 270°
Straw blowing 15m right side / 13 m left side



Extended universal chute
For a distribution very close to the machine. Extended central part 400 mm



Polyfeed shredder
Shredder with teeth used for straw (exclusively)



2nd control unit
Control of rear collection door to save time when loading.



Self-loading rear door 1200 kg
Door equipped with a 2nd cylinder to load heavy bales (grass)



500 L Mixing Hopper
System that integrates dry nutrients that will be distributed with the silage



CASTOR R
Standard Equipments

- Lateral chute for feeding and straw blowing
- Mechanical shredder with V blades
- Hydraulic comb (except Castor 20 R)
- Two-speed gearbox
- Hydraulic loading rear door
- Electric control – Comfort (except Castor 180 R & Polyfeed 12)

Model	20 R	30 R	60 R	60 R ²	80 R	Polyfeed 12	180 R
Capacity (m ³)	2	3	6		8	12	18
Number of shredders		1			2		3
Distribution height with lateral / U chute (mm)	820 / 1102		970 / 1500		1010 / 1300	1400 / -	900 / 1400
Straw-bedding height with lateral / U chute (mm)	1185 / 2947		1600 / 2500		1880 / 2500	1900 / -	1900 / 3200
Straw-bedding distance with lateral / U chute (mm)		18 / 15 m (right side) – 13 m (left side)				18 m	18 / 15 m - 13 m
Overall height with lateral / U chute (mm)	1952 / 2396	2070 / 2430	2110 / 2460	2250 / 2500	2250 / 2880	2700	2820
Overall width with lateral / U chute (mm)	2105 / 1856	2210 / 1980	2270 / 2120	2090 / 2750	2500 / 2300	2480 / -	2450 / 2400
Overall width at wheels (mm)	-	1980	2120		2090		2400
Overall length of door Open/Closed (mm)	4250 / 2770	5360 / 3770	7000 / 5410	5890 / 4790	7550 / 5970	6800 / -	7700 / 9550
Useful length (mm)	1400	1450	3080	2560	3650	3830	4900
Tractor Power (HP)		65			70		80
Oil flow min / max (L/min)	30 / 60				15 / 45		
Pressure (bars)				160 / 200			
Unladen weight (kg)	1600	1970	2600	2800	3040	3460	4500



CASTOR G
Standard Equipments

- Lateral chute for feeding and straw blowing
- Mechanical shredder with V blades
- Hydraulic comb (except Castor 60 G)
- Two-speed gearbox
- Rounded silage unloading claw
- Electric control – Comfort

Model	45 G	53 G	60 G	80 G
Capacity (m ³)	4,5	5,3	6	8
Number of shredders		1		2
Silage loading height (mm)	3000	3670		3500
Distribution height with lateral / U chute (mm)	1050 / -	1050 / 1400		1300 / 1500
Straw-bedding height with lateral / U chute (mm)	1740 / -	1600 / 2400		1890 / 2500
Straw-bedding distance with lateral / U chute (mm)	18 / -		18 / 15 m (right side) – 13 m (left side)	
Overall height with lateral / U chute (mm)	1880 / -	2020 / 2300	1980 / 2330	2050 / 2350
Overall width with lateral / U chute (mm)	2300 / -	2330 / 2150		2390 / 2310
Overall width at wheels (mm)	2100	2150		2310
Overall length (mm)	3800	4640	5090	5840
Useful length (mm)	1650	2450	2970	3770
Tractor Power (HP)		50	65	70
Oil flow min / max (L/min)		25 / 40		25 / 45
Pressure (bars)			160 / 200	
Unladen weight (kg)	1740	2400	2600	3300



CASTORMIX
Standard Equipments

- Lateral chute for feeding and straw blowing
- Mechanical shredder with V blades
- Mixing canopy
- Hydraulic comb (except Castor 60 G)
- Two-speed gearbox
- Rounded silage unloading claw (except Castormix 180)
- Electric control – Comfort

Model	60	80	180
Capacity (m ³)	6	8	18
Equivalent dairy cows	30 - 40	40 - 50	75 - 100
Number of shredders	1	2	3
Silage loading height (mm)	300	3760	NA
Distribution height with lateral / U chute (mm)		1500	1400
Straw-bedding height with lateral / U chute (mm)		2500	3200
Straw-bedding distance with lateral / U chute (mm)		18 / 15 m (right side) – 13 m (left side)	
Overall height with lateral / U chute (mm)	2330	2350	2820
Overall width with lateral / U chute (mm)		2310	2400
Overall width at wheels (mm)		2310	2400
Overall length (mm)	5090	5840	7700
Useful length (mm)	2970	3770	4900
Tractor Power (HP)	65	75	80
Oil flow min / max (L/min)		20 / 45	15 / 45
Pressure (bars)		160 / 200	
Unladen weight (kg)	2870	3300	4550

EASY TO MAINTAIN

To ensure an optimal performance of the machine and keep maximum efficiency as in the first days, it is necessary to ensure a small amount of maintenance to the bale feeders. A yearly maintenance will enable your machine to increase significantly its lifetime while keeping high working output.



Curved cutting knives to preserve the abrasiveness of the shredder



Hydraulic filter to keep high efficiency of the machine.



Totally bolt-on bed chain for an easy maintenance

