



# UBI RANGE

BALE UNROLLER



# OUR COMPLETE RANGE OF BALE

## UBI - UBI SWIVELLING

The bale feeders **UBI** and **UBI Swivelling** are standard equipped with tilting body to allow an efficient unrolling of **Hay / Straw / Wrapped / Alfalfa**. The loading arm is adjusted hydraulically for handling different diameters of bales. The bale unrollers are hitched on the 3 point of the tractor. **UBI distributes on the right side and UBI Swivelling has a 180° rotation.**



### 180° ROTATION

180° rotation allows distributing on the right or left side or in the centre of the feeding alley to meet every farm building's configuration.

### COMPACT SIZE AND ACCURATE DISTRIBUTION



Loading the bale



Moving machine



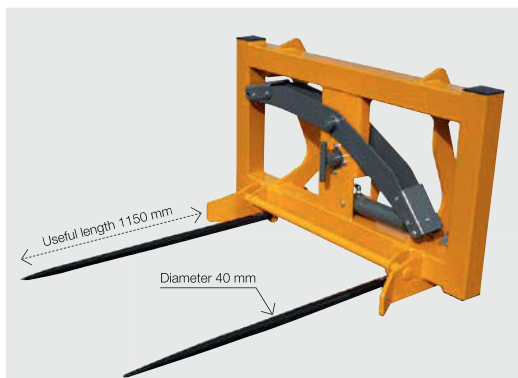
Unrolling the bale



# E UNROLLERS

## UBI PIC / UBI PIC FIX

**UBI PIC** and **UBI PIC FIX** are 2 in 1 machines that require the use of only one tractor loader or telehandler to unroll a bale. The UBI PIC version has a tilting body to control the position of the bale (not available with the FIX version). **These machines can be customized based on the building's configuration, the distribution is made on the left side as standard, on the right side as an option, or both sides as an option.**

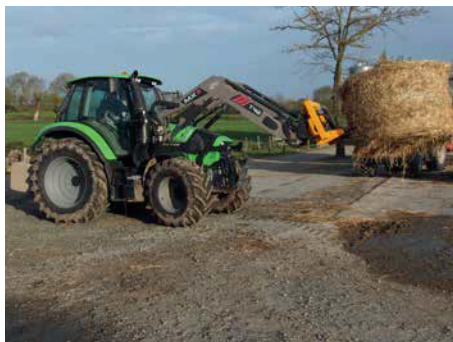


### BALE SPIKE

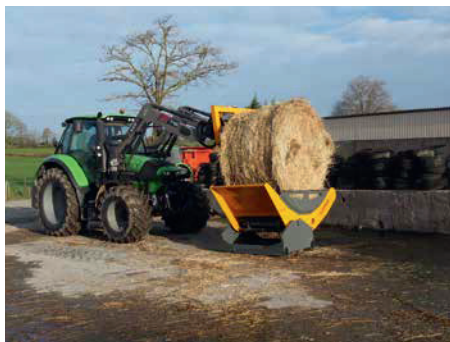
The bale spike part (fitted with 2 tines) allows dropping the bale on the bale unroller. The hitching frame drives and automatically locks the bale unroller once raised.



### HANDLING AND DISTRIBUTION WITH ONLY ONE LOADER



Handling the bale with the bale spike



Loading the bale with the bale spike



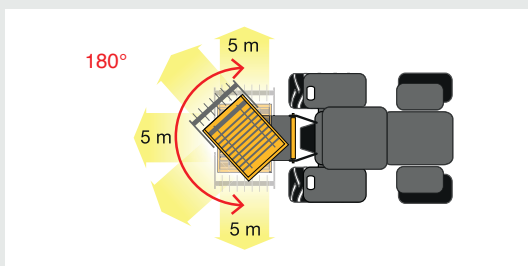
Unrolling the bale

# UBI JET / UBI JET DISK

The bale unroller spreaders **UBI JET** and **UBI JET DisK** are standard equipped with tilting body allowing an efficient unrolling of Hay / Straw / Wrapped / Alfalfa. The loading arm is adjusted hydraulically for handling different diameters of bales. **These models are standard equipped with retractable teeth to avoid the material to go under the machine and a 180° rotation.** These machines can be hitched at the 3-point hitch of the tractor or on a telehandler.

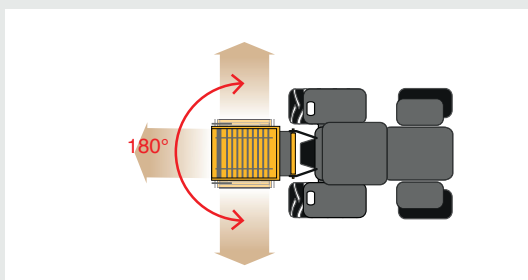


## SPREADER



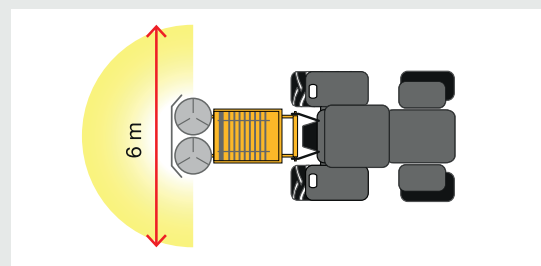
**Hydraulically retractable spreading system:**  
Spreading Right / Left / Centre up to 5m.

## DISTRIBUTION



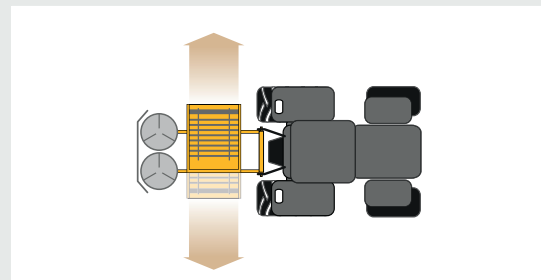
**Rotation 180°** which allows to distributing at the right / left / centre of the feeding alley.

## SPREADER



**Spreading with discs:** Spreading 180° up to 6m

## DISTRIBUTION



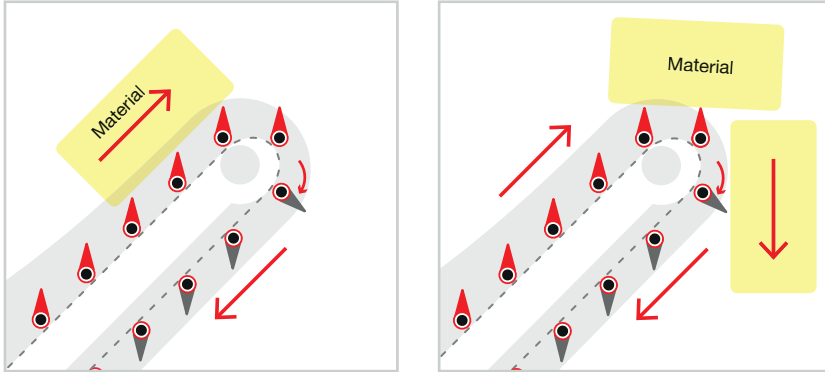
**Distribution right or left of the feeding alley**



# LUCAS G KNOW-HOW

## RETRACTABLE TEETH

Efficient bale unrolling which avoid the product to go under the machine, and let a homogeneous line along the feeding table.



## TILTING BODY

Hydraulically tilting body dedicated to load bales. This system enables the user to put the core of the bale at the very end of the conveyor chain to unroll the core of the bale. It is also possible to distribute half-bale.



## CONTROLS ADPATED TO YOUR NEEDS



### Manual control (standard)

Each lever controls a function. Functions can be used simultaneously.



### Function selector

Select the function trough the button, the function is activated thank to the distributor of the tractor. (not simultaneous functions)



### Electric control

All functions are centralized in a unique display with buttons for each function. Functions can be used simultaneously.



	UBI	UBI Swivelling	UBI PIC	UBI PIC-FIX	UBI JET	UBI JET-DISK
Number of bales	1		1		1	
Overall height (mm)	2300		1260		2300	
Overall width (mm)	2100	1610	2280		2760 / 2100	2100 / NA
Overall length (mm)	1610	2100	1900		1610	
Tractor power (HP)	100		100		100	
Hydraulic distributor	1 Simple Effect / Return		2 Double Effect	1 Double Effect	1 Simple Effect / Return	
Unladen weight (kg)	710	880	750	730	990	950
STANDARD EQUIPMENT						
Distribution	Right	180°	Left		180°	
Tilting body	//		//	//	//	
Unrolling process	Fixed teeth		Fixed teeth		Retractable teeth	
Loading process	Loading arm		Bale spike		Loading arm	
Control	MANUAL		MANUAL		MANUAL	
OPTIONS						
Retractable teeth	//		//		//	
Function selector	2	3	1	0	4 or 5	3
Electric control	//		//		//	
3 points coupling	//		//	//	//	
Hitch for tractor loader	//		//		//	
Telehandler hitch	//		//		//	

Legends // : Standard Equipment // : Option // : Not available



# LUCAS G

focus on performance

Head Office

22, Rue du Stade, 85130 La Verrie, France  
 T : +33 (0)2 51 65 41 36 // F : +33 (0)2 51 65 41 51  
 lucasg@lucasg.com // www.lucasg.com

YouTube : Lucas G

facebook : LucasGFrance