



ATV & UTV RANGE



Honda. Dependable. Dawn 'til dusk, day after day.



Hard hitting ATV & UTVs. Designed to make tough work easy.

Our range of ATVs and UTVs is trusted every day by a wide variety of users for countless tasks. Like you, they expect absolute reliability, exceptional performance, and robust build quality. That's why every Honda ATV and UTV comes with a standard 2-year manufacturer's warranty* — for total peace of mind.

Whether you use it for farming, gamekeeping, forestry, equestrian work, or snow clearing, your Honda will soon become an indispensable part of your daily routine. You can depend on it in any weather, across any terrain, and for an incredible range of jobs.

A problem with your new ATV or UTV is the last thing you want — and with Honda's legendary reputation for reliability, it's also the last thing you can expect.

Contents

INTRODUCTION	04
HONDA UTV	
PIONEER 520	10
HONDA ATV	
FOREMAN 520 PS / 520 IRS PS / 520 DCT IRS PS	16
FOURTRAX 420 ES / 420 PS / 420 DCT PS / DCT IRS PS	20
SPECIFICATIONS	24
HONDA TECHNOLOGIES	26
HONDA PHILOSOPHY	28



Engineered with Excellence

Built better to last longer

So, what makes Honda ATVs and UTVs so good?

Honda North Carolina Manufacturing (NCM) in Swepsonville serves as the exclusive production hub for Honda ATVs in North America, working alongside Honda South Carolina Manufacturing (SCM) in Timmonsville — the world's only facility dedicated to building Honda side-by-sides. NCM produces both the Honda FourTrax and Foreman series of ATVs.

Across these two sites, more than 650 Honda Associates manufacture and assemble our full range of ATVs and UTVs. Many of them also use a Honda in their own work and leisure time — making these machines not just a product they build, but a true part of their everyday lives.



Renowned for Reliability

Quality You Can Count On

At Honda, we understand that your ATV or UTV isn't just a vehicle — it's a vital part of your day-to-day life. Our machines are trusted by thousands of users across the world, performing an almost limitless range of tasks in some of the toughest environments imaginable. From early mornings on the farm and long days managing woodland to the precision work of gamekeeping or the challenges of snow clearing, our ATVs and UTVs are built to deliver when it matters most.

Every Honda is engineered with the same core principles — strength, durability, and dependability. We design and test each component to withstand the demands of real-world use, ensuring that your machine performs just as well on the hundredth job as it did on the first. It's this unwavering commitment to quality that allows us to offer a 2-year manufacturer's warranty* across our entire ATV and UTV range as standard.

No matter the weather, no matter the terrain, you can rely on your Honda to get the job done. From hauling, towing, and transport to everyday maintenance and recreation, it will quickly become an indispensable tool — one you'll wonder how you ever worked without.

Because when you choose Honda, you're not just buying an ATV or UTV — you're investing in a machine built on decades of engineering excellence and a global reputation for reliability. A problem with your new Honda is the last thing you'll want — and, thanks to our proven quality, it's also the last thing you'll need to worry about.



Uniquely, all research and product development takes place at either SCM, or at the Honda Car R&D facility in Ohio, where using computer aided modelling and advanced car design software, our engineers have been able to test and improve model features such as rack weights, ride dynamics and ergonomics — producing a lighter, stronger product.

All frames, bodywork, fuel tanks and engine castings are fabricated on-site, and with up to 68 model variations constructed at NCM, nearly every model that comes off the production line differs from the one before. But for each model, the emphasis remains the same, it has to offer durability, quality and reliability with the overarching principle of safety for all those involved.

Our vision has always been to be a company that society wants to exist, even at manufacturing level. It's what drives us to remain a leader in the industry, whilst having a positive impact both globally and locally, from North Carolina to North Wales and everywhere else Hondas are relied upon day in, day out.

*Subject to following the service schedule, 2 year warranty applies to domestic and non-competitive use only.



Choosing your suspension

Every ATV in our lineup comes equipped with independent front suspension, ensuring a smooth and controlled ride. When it comes to rear suspension, however, several models give you a choice between two different setups. It's not about one being better than the other — it's about finding the option that best fits your specific needs and the way you ride.



Swingarm Rear Suspension

An excellent choice for riders looking for a hard-working ATV with plenty of towing capability. A solid locked rear-axle with a trailer hitch bolted directly to the axle housing, means the swingarm design is simple and durable, and has been a proven mainstay of Honda ATVs over the decades.

- **Bolts direct to axle housing**
Less body squat when towing
- **Rigid locked rear axle**
Solid tow hitch capability



Independent Rear Suspension (IRS)

A smart choice for ATV riders who spend long days in the saddle, especially on tough or unpredictable terrain. Each wheel moves independently, so you get a smoother ride. As an added bonus each tyre remains in optimal contact with the ground, so in certain circumstances you can get superior traction from the rear wheels.

- **Longer travel shock absorption**
More comfort and better ground clearance
- **Improved tow capacity**
Pull up to an impressive 600kg*
- **Note:** IRS is standard on all UTV models.



Choosing your transmission

There are four different transmission options to choose from within our ATV range, as well as Power Steering on certain models. All of which have their specific benefits depending on how, and where, you will mostly be using your ATV.



Manual

With manual shift gear changes and an automatic clutch mechanism, nothing can match a traditional manual transmission ATV in terms of simplicity. So it makes this an ideal transmission for riders who use their ATVs day in, day out on a variety of tasks.



Electric Shift Program (ESP)

With its automatic clutch, ESP lets you quickly and easily shift between gears with a pair of handlebar mounted buttons.



Automatic (AT)

Standard on UTV models – This effortless three-speed drive system is based on the technology in modern automatic cars, providing seamless acceleration on any terrain.



Dual Clutch Transmission (DCT)

Using two clutches, DCT models combine the strength of a manual transmission with the convenience of an automatic. The smooth shifts, excellent control and true engine braking it provides can be a real advantage in technical conditions.



Power Steering (PS)

Optimised to reduce steering effort and kickback through the handlebar, PS offers added comfort and control – ideal for those who spend long hours in the saddle.

*Tow capacity varies by model, please refer to the specification on page 32. Tow ball is an optional accessory.

Honda Authorised Dealers

Over 100 Trusted Dealers – Your ATV & UTV Experts

When you choose Honda, you choose confidence. With over 100 trusted dealers across the UK, we make sure your experience is exceptional from start to finish.

Sales

See, touch, and explore our full range of Honda ATV and UTVs. Our dealers know every model inside-out and are trained to help you find the perfect fit.

Service

Enjoy peace of mind with factory-trained technicians, genuine Honda parts, and fast next-day delivery[†]. Every machine gets a full Pre-Delivery Inspection for peak performance.

Expertise

Our dealers are true specialists, bringing years of hands-on experience and valuable feedback that helps shape the future of Honda products.



Call **0345 200 8000^{††}**
and we'll find your closest
Honda Authorised Dealer



Committed to rider safety

Complimentary Easi Rider Training

At Honda, rider safety is our top priority. That's why every new Honda ATV or UTV comes with an EASI Rider Course[®] included at no additional cost.

Your Honda Authorised Dealer will take care of registering you for the course — and it's well worth completing, as it can support risk assessments for PUWER or HSE compliance.

For commercial users, HSE risk assessments may require additional training, such as Lantra courses or training included in tractor loading or towing programmes.

To help you get the best performance from your Honda — safely — we strongly recommend taking approved training. You can find details on both basic and advanced training options directly from EASI.



For more information
call **01273 494 128** or
visit www.quadsafety.org

[†]Next day delivery of UK stocked parts, ordered before 5pm.

^{††}Charged at local rate from landlines.

PIONEER 520

Built to conquer every challenge

Small but mighty, with a slim profile allowing you and a passenger to go places other UTVs can't.



PIONEER 520

The compact UTV

Our Pioneer 520 is powerful, versatile and durable. Strong enough to tackle the toughest terrains, and compact enough to reach the tightest of locations.

With its powerful 518 cc engine specially tuned for low-rpm torque, and its efficient five-speed automatic transmission, the Pioneer 520 delivers plenty of pulling power and traction. Its useful, tilting cargo bed with assist strut, allows you to carry and dump up to 204 kg with ease. Its fully independent suspension provides a smooth and comfortable ride, even over rough terrain. But it's overall size is what makes it so versatile, at just 127 cm wide it offers excellent manoeuvrability, allowing you and a passenger to reach places other UTVs can't – and weighing just 469 Kg, it happens to be one of the lightest petrol UTVs on the market too.

Featured Honda technologies:



Traxlok™

Traxlok® allows you to quickly switch between the 'go-anywhere' traction of 4wd and the increased manoeuvrability and lighter steering of 2wd.



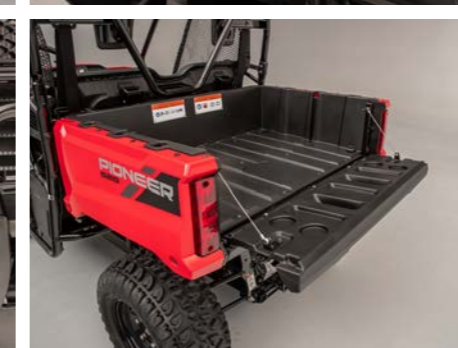
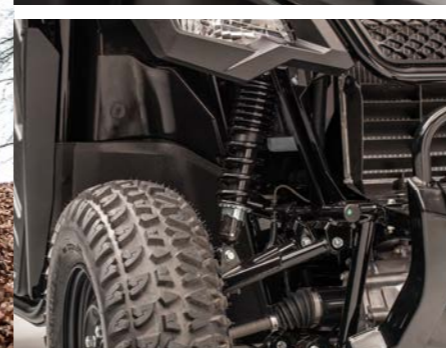
IRS Suspension

Independent Rear Suspension (IRS) for improved comfort, traction and load handling capability.



Automatic Transmission (AT)

This effortless three-speed drive system is based on the technology in modern automatic cars, providing seamless acceleration on any terrain.



Key specification features:

- **Fuel-injected 518 cc OHV**
single-cylinder engine Ensures effortless all-weather starts and high-altitude operation
- **204 kg cargo bed capacity**
With a tailgate that opens flat for easy loading, carrying and dumping
- **Impressive 454 kg towing capacity**
Powerful despite its compact size
- **Five-speed auto transmission**
Switch with ease between manual paddle shift gears or auto transmission
- **Side-by-side seating**
A comfortable bench-style seat carries the rider and a passenger
- **Easy access**
Front opening doors allow for easy access for both rider and passenger

PIONEER 520	
SXS520	
Heavy duty UTV	4WD Two seats
Engine Size	518 cc
Engine Type	Liquid-cooled, wet-sump, longitudinally mounted OHV 4-stroke single cylinder
Bore x Stroke	96.0 mm x 71.5 mm
Fuel System	PGM-FI, 36 mm throttle-body
Ignition	Full-transistorised type with electronic advance
Starter	Electric
Gears	Five forward gears with reverse
Transmission	Automatic with auto or manual shift modes
Drive	4wd Direct drive-shafts with switchable 2wd/4wd and locking front differential
Power Steering	-
Front Suspension	Independent double-wishbone
Rear Suspension	Independent double-wishbone (IRS)
Adjustable Pre-load	Rear suspension
Suspension Travel	Front: 147 mm Rear: 150 mm
Front Brakes	Dual 200 mm hydraulic discs
Rear Brake	170 mm hydraulic disc
Tyres	Front: 24 x 8-12 Rear: 24 x 10-12
Dimensions	L: 2667 mm W: 1270 mm H: 1808 mm
Wheelbase	1854 mm
Seat Height	703 mm
Ground Clearance	216 mm
Min. Turning Radius	3.9 m
Fuel Capacity	15.5 L, incl. 4.2 L reserve
Bed Capacity	204 kg
Towing capacity	454 kg
Dry weight	469 kg
Colours	Red

For more information on Honda technologies see page 32.

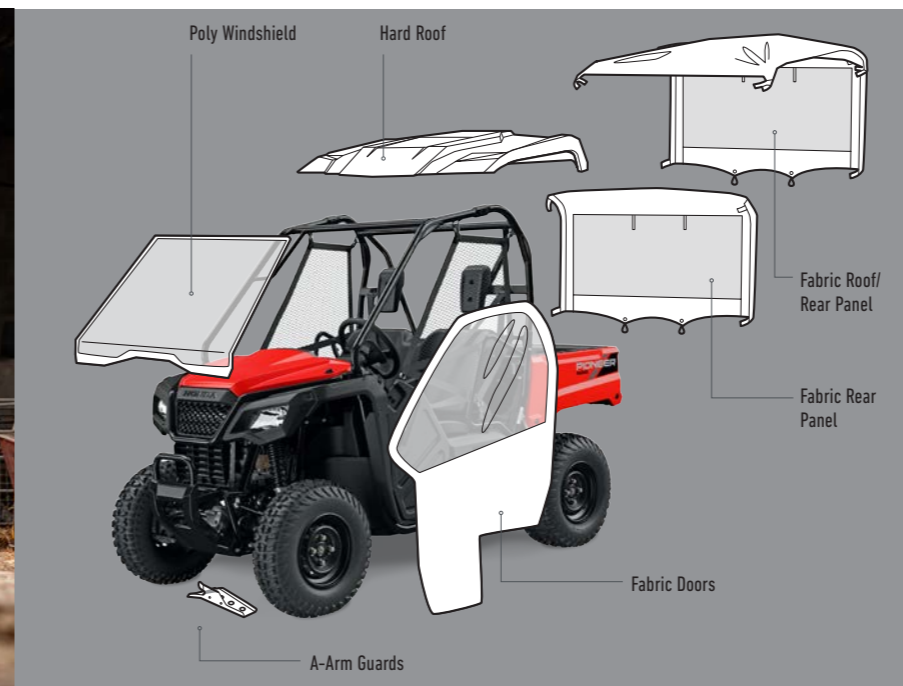
PIONEER 520 Accessories

The Honda Pioneer. As versatile as you are.

The Pioneer is the perfect vehicle for working the farm or for going hunting. With so many ways to customise it, the Pioneer is ready to go – your way.

Enjoy the benefits of exact factory specifications, ensuring a precise fit, superior function and integrated design, all specifically built and tested to the same rigorous standards as our ATVs and UTVs.

For more information on the full range of Honda Genuine Pioneer Accessories, please see the full Pioneer Accessory Brochure and contact your Authorised Honda ATV dealer.



Honda Genuine Accessories

From fabric doors to a hard roof – customise your Pioneer 520 to suit your own needs, with these Honda Genuine UTV Accessories.

PIONEER 520	
SXS520	
Honda Genuine Accessory	Part number:
Front A Arm Guards	08P70-HL5-A00
Rear A Arm Guards	08P71-HL5-A00
Skid Plate	08P70-HL5-A40
Drawbar	08L76- HL5-A00
Hard Roof	08R70- HL5-A01
Polycarbonate Windscreen	0SR73-HL5-100
Wind deflector	0SR73-HL5-101B
Fabric Doors	0SR90-HL5-A01B
Fabric Rear Panel	0SR95-HL5-A01
Fabric roof/Rear Panel	0SR85-HL5-A01B
Mirror L/R Kit	0SV05-HL5-100



Please speak to your authorised Honda dealer to confirm exact availability.

FOREMAN 520

Built to cover any terrain

Powerful and efficient, with excellent agility and towing capability.



FOREMAN 520

The all-round work horse

Heavy loads and long days are no match for the Honda Foreman. Designed for dependable handling and powerful performance, it delivers the legendary durability Honda is famous for – whatever the terrain or conditions.

Its 518 cc liquid-cooled engine provides impressive low-end torque and improved fuel efficiency, while the precision-engineered chassis ensures smooth, confident handling. The result is a machine that's as capable as it is enjoyable to ride.

A thick, padded seat keeps you comfortable through long hours in the field, and Honda's exclusive TraxLok® system lets you easily switch between 2WD and 4WD, with a push-button full differential lock for maximum traction – even in deep mud. Whatever your work demands, there's a Honda Foreman built to handle it.

Featured Honda technologies:



TraxLok™

TraxLok® allows you to quickly switch between tough 4wd and the lighter steering of 2wd.



Transmission

Manual 5-speed transmission with automatic clutch for excellent control and towing capability.



Electric Shift Program (ESP)

Handlebar mounted Electric Shift Program for quick push-button gear selection.



Differential Lock

Differential Lock provides push-button additional traction in slippery conditions.



Power Steering (PS)

Greatly reduces steering effort and kickback through the handlebar.



Swingarm Rear Suspension

Preload rear suspension allows the rider to adjust the ride to suit the load, task and conditions.



IRS Rear Suspension

Independent Rear Suspension (IRS) for improved comfort, traction and load handling capability.



Key specification features:

- **Large 518 cc engine**
518 cc liquid cooled, single cylinder 4-stroke engine for superior torque and increased fuel efficiency
- **Forward/Reverse Skip Switch (ES)**
Bypass neutral when reversing
- **Sturdy front and rear racks**
Providing a better surface area
- **1.9L water resistant utility box**
Providing useful storage
- **Protecting guards**
For the lower suspension arms & driveshafts

FOREMAN 520 PS / FOREMAN 520 IRS PS

TRX520FM2* / TRX520FE2 (ES) / TRX520FM6* (IRS)

Utility work ATV	4WD	*Available in Green
Engine Size	518 cc	
Engine Type	Liquid-cooled, wet-sump, longitudinally mounted OHV 4-stroke single cylinder	
Bore x Stroke	96.0 mm x 71.5 mm	
Fuel System	PGM-FI, 36 mm throttle-body	
Ignition	Full-transistorised type with electronic advance	
Starter	Electric	
Gears	Five forward gears plus reverse	
Transmission	Auto clutch with manual FE2 : electric shift	
Drive	4wd Direct drive-shafts with TraxLok® switchable 2wd/4wd and locking front differential	
Power Steering	Power Steering	
Front Suspension	Independent double-wishbone	
Rear Suspension	Swingarm with single shock / Dual A-Arm (IRS)	
Adjustable Pre-load	Front and Rear suspension	
Suspension Travel	Front: 185 mm Rear: 215 mm	
Front Brakes	190 mm dual hydraulic discs	
Rear Brake	170 mm sealed mechanical drum	
Tyres	Front: 25 x 8-12 Rear: 25 x 10-12	
Dimensions	L: 2185 mm W: 1204 mm H: 1237 mm FE2: L: 2103 mm W: 1204 mm H: 1220 mm FM6: L: 2185 mm W: 1204 mm H: 1240 mm	
Wheelbase	1270 mm FM6: 1293 mm	
Seat Height	924 mm FE2: 869 mm FM6: 919 mm	
Ground Clearance	248 mm FM6: 251 mm	
Min. Turning Radius	3.5 m	
Fuel Capacity	14.7 L, incl. 4.9 L reserve	
Bed Capacity	Front: 44.9 kg / Rear: 84.8 kg	
Towing capacity	384 kg FM6: 599 kg	
Dry weight	283 kg FE2: 285 kg FM6: 304 kg	
Colours	Red / Green*	

For more information on Honda technologies see page 32.

FOREMAN 520 DCT

The Ultimate 'Do-It-All' ATV

Engineered for performance, comfort, and control, the Foreman 520 DCT is built to handle whatever the trail – or the job – throws at it. With long-travel independent rear suspension and exceptional load-carrying capacity, it's the most capable and comfortable ATV in its class.

Work smarter, not harder. The Foreman DCT features a rugged chassis for class-leading handling, along with independent rear suspension and pre-load adjustable twin shocks offering 216 mm of travel – perfect for conquering tough terrain with ease.

Its powerful engine delivers impressive torque, while the advanced Dual Clutch Transmission (DCT) ensures smooth, responsive shifting. Optimized shift mapping boosts fuel efficiency, and the new manual-override function lets you take control– downshifting into corners or upshifting on descents, even in automatic mode.

With power steering to reduce fatigue and a high-output headlight for enhanced visibility, you can ride longer and safer. Pre-load adjustable shocks and a rear disc brake round out the package, delivering a smoother, more controlled ride every time.

Featured Honda technologies:



TraxLok™

TraxLok® allows you to quickly switch between tough 4wd and the lighter steering of 2wd.



Dual Clutch Transmission

Our unique, automated Dual Clutch Transmission does all the hard work for you, providing seamless, efficient gear changes



Hi/Lo Gear Ratios

Hi/Lo Gear Range selector delivers unparalleled low-down load pulling power – up to 600kg



Differential Lock

Differential Lock provides push-button additional traction in slippery conditions.



IRS Rear Suspension

Independent Rear Suspension (IRS) for improved comfort, traction and load handling capability.



Power Steering (PS)

Greatly reduces steering effort and kickback through the handlebar.



Key specification features:

- **Large 518 cc engine**
518 cc liquid cooled, single cylinder 4-stroke engine for superior torque and increased fuel efficiency
- **Forward/Reverse Skip Switch**
Bypass neutral when reversing
- **Manual override**
Override for added control
- **Sturdy front and rear racks**
Providing a better surface area
- **1.9L water resistant utility box**
Providing useful storage
- **Protecting guards**
For the lower suspension arms & driveshafts

FOREMAN 520 DCT IRS PS

TRX520FA6		
Utility work ATV	4WD	Available in Green
Engine Size	518 cc	
Engine Type	Liquid-cooled, wet-sump, longitudinally mounted OHV 4-stroke single cylinder	
Bore x Stroke	96.0 mm x 71.5 mm	
Fuel System	PGM-FI, 36 mm throttle-body	
Ignition	Full-transistorised type with electronic advance	
Starter	Electric	
Gears	Five forward gears plus reverse	
Transmission	Automatic Dual Clutch Transmission (DCT) with auto-shifting or electric shift	
Drive	4wd Direct drive-shafts with TraxLok® switchable 2wd/4wd and locking front differential	
Power Steering	Power Steering	
Front Suspension	Independent double-wishbone	
Rear Suspension	Dual A-Arm (IRS)	
Adjustable Pre-load	Front and Rear suspension	
Suspension Travel	Front: 185 mm Rear: 215 mm	
Front Brakes	190 mm dual hydraulic discs	
Rear Brake	170 mm single hydraulic disc	
Tyres	Front: 25 x 8-12 Rear: 25 x 10-12	
Dimensions	L: 2185 mm W: 1204 mm H: 1237 mm	
Wheelbase	1293 mm	
Seat Height	922 mm	
Ground Clearance	248 mm	
Min. Turning Radius	3.5 m	
Fuel Capacity	14.7 L, incl. 4.9 L reserve	
Bed Capacity	Front: 44.9 kg / Rear: 84.8 kg	
Towing capacity	599 kg	
Dry weight	318 kg	
Colours	Red / Green	

For more information on Honda technologies see page 32.

FOURTRAX 420

Built to cover any terrain

A true, mid-size all-rounder with class-leading power and efficiency.



FOURTRAX 420

The UK's best selling ATV

Engineered for agility and built to tow with confidence, the Fourtrax 4WD models are designed to conquer the toughest conditions with ease.

At its heart lies a 420cc fuel-injected, liquid-cooled, longitudinally mounted engine – delivering the perfect balance of performance and fuel economy. Optimised using advanced Computer-Aided Design (CAD), the Fourtrax offers class-leading handling and all-day comfort, making even the hardest jobs smoother and more enjoyable.

With rugged utility styling and a durable double-cradle chassis, it's built to handle whatever the day throws at it. The multi-function LCD display keeps key information in clear view, while the adjustable pre-load front and rear suspension let you fine-tune your ride to suit any terrain or task.

Featured Honda technologies:



Traxlok™

Traxlok® allows you to quickly switch between the 'go-anywhere' traction of 4wd and the increased manoeuvrability and lighter steering of 2wd.



Manual Transmission (MT)

Manual 5-speed transmission with automatic clutch and low-rpm engagement point for excellent control and towing capability.



AP Suretrac™

AP Suretrac™ torque-sensitive limited-slip differential for extra grip in slippery conditions.



Power Steering (PS)

Greatly reduces steering effort and kickback through the handlebar.



IRS Suspension

Independent Rear Suspension (IRS) for improved comfort, traction and load handling capability.



Key specification features:

- **Forward/Reverse Skip Switch (DCT & ES)**
Bypass neutral when reversing
- **Sturdy front and rear racks**
Providing a better surface area
- **1.9L water resistant utility box**
Providing useful storage
- **Protecting guards**
For the lower suspension arms & driveshafts

FOURTRAX 420		
TRX420FM1* / TRX420FE1 (ES) / TRX420FM2*		
Utility work ATV	4WD	*Available in Green
Engine Size	420 cc	
Engine Type	Liquid-cooled, wet-sump, longitudinally mounted OHV 4-stroke single cylinder	
Bore x Stroke	86.5 mm x 71.5 mm	
Fuel System	PGM-FI, 34 mm throttle-body fuel-injection system	
Ignition	Full-transistorised type with electronic advance	
Starter	Electric / Recoil	
Gears	Five forward gears plus reverse	
Transmission	Auto clutch with manual FE1: electric shift	
Drive	4wd Direct drive-shafts with TraxLok® switchable 2wd/4wd and locking front differential	
Power Steering	TRX420FM2	
Front Suspension	Independent double wishbone	
Rear Suspension	Swingarm with single shock	
Adjustable Pre-load	Front and Rear suspension	
Suspension Travel	Front: 170 mm Rear: 170 mm	
Front Brakes	190 mm dual hydraulic discs	
Rear Brake	160 mm sealed mechanical drum	
Tyres	Front: 24 x 8-12 Rear: 24 x 10-11	
Dimensions	L: 2103 mm W: 1204 mm H: 1176 mm FE1: L: 2103 mm W: 1204 mm H: 1174 mm	
Wheelbase	1270 mm	
Seat Height	855 mm	
Ground Clearance	183 mm	
Min. Turning Radius	2.8 m	
Fuel Capacity	14.7 L, incl. 4.9 L reserve	
Rack Capacity	Front: 29.9 kg / Rear: 60 kg FE1: 60.3 kg	
Towing capacity	384 kg	
Dry weight	FM1: 267 kg FE1: 269 kg FM2: 273 kg	
Colours	Red / Green*	

For more information on Honda technologies see page 32.

FOURTRAX 420 DCT

The advanced mid-size ATV

For riders who demand simplicity, strength, and performance, the Fourtrax DCT 4WD sets the benchmark. Its automatic Dual Clutch Transmission (DCT) delivers smoother shifting and greater fuel efficiency – making every ride both effortless and rewarding.

At its core is a powerful yet efficient 420 cc fuel-injected, liquid-cooled OHV engine that delivers strong, responsive performance with excellent economy and easy starts in any weather. Designed with rider-focused technology, the Fourtrax 420 DCT provides exceptional handling, durability, and comfort across even the most challenging terrain.

Honda's proven Dual Clutch Transmission – refined over years of success in our leading motorcycles– lets you choose between smooth automatic shifting or manual control via Electric Shift Program (ESP) at the touch of a button.

With an axle-mounted heavy-duty trailer hitch and a 384 kg towing capacity, the Fourtrax 420 DCT is built to work hard– and ride even harder.

Featured Honda technologies:



Traxlok™

Traxlok® allows you to quickly switch between the 'go-anywhere' traction of 4wd and the increased manoeuvrability and lighter steering of 2wd.



Transmission

Choose between push button ESP or our unique five-speed Dual Clutch auto-transmission for seamless acceleration over any terrain.



AP Suretrac™

AP Suretrac™ torque-sensitive limited-slip differential for extra grip in slippery conditions.



Power Steering (PS)

Greatly reduces steering effort and kickback through the handlebar.



IRS Suspension

Independent Rear Suspension (IRS) for improved comfort, traction and load handling capability.



Key specification features:

- **Forward/Reverse Skip Switch (DCT & ES)**
Bypass neutral when reversing
- **1.9L water resistant utility box**
Providing useful storage
- **Enhanced shift map**
Monitors RPM in real time shifting
- **Manual override**
Override for added control
- **Protecting guards**
For the lower suspension arms & driveshafts

FOURTRAX 420 DCT PS

TRX420FA2 / TRX420FA6

Utility work ATV	4WD
Engine Size	420 cc
Engine Type	Liquid-cooled, wet-sump, longitudinally mounted OHV 4-stroke single cylinder
Bore x Stroke	86.5 mm x 71.5 mm
Fuel System	PGM-FI, 34 mm throttle-body fuel-injection system
Ignition	Full-transistorised type with electronic advance
Starter	Electric / Recoil
Gears	Five forward gears plus reverse
Transmission	Automatic Dual Clutch Transmission (DCT) with auto-shifting or electric shift
Drive	4wd Direct drive-shafts with TraxLok® switchable 2wd/4wd and locking front differential
Power Steering	Power Steering
Front Suspension	Independent double wishbone
Rear Suspension	FA2: Swingarm with single shock FA6: Dual A-Arm (IRS)
Adjustable Pre-load	Front and Rear suspension
Suspension Travel	FA2: Front: 170 mm Rear: 170 mm FA6: Front: 185 mm Rear: 215 mm
Front Brakes	190 mm dual hydraulic discs
Rear Brake	FA2: 160 mm sealed mechanical drum FA6: 170 mm single hydraulic disc
Tyres	Front: 24 x 8-12 Rear: 24 x 10-11
Dimensions	FA2: L: 2103 mm W: 1204 mm H: 1176 mm FA6: L: 2146 mm W: 1204 mm H: 1203 mm
Wheelbase	FA2: 1270 mm FA6: 1295 mm
Seat Height	FA2: 855 mm FA6: 901 mm
Ground Clearance	FA2: 183 mm FA6: 246 mm
Min. Turning Radius	FA2: 2.8 m FA6: 3.5 m
Fuel Capacity	14.7 L, incl. 4.9 L reserve
Bed Capacity	Front: 29.9 kg / Rear: 60 kg
Towing capacity	384 kg
Dry weight	FA2: 291 kg FA6: 300 kg
Colours	Red

For more information on Honda technologies see page 32.

Technical Specifications



UTV / ATV MODEL (4WD)	PIONEER 520		
MODEL NO.	SXS520		
	Heavy duty UTV	4WD	Two Seats
Engine Size	518 cc		
Engine Type	Liquid-cooled, wet-sump, longitudinally mounted OHV 4-stroke single cylinder		
Bore x Stroke	96.0 mm x 71.5 mm		
Fuel System	PGM-FI, 36 mm throttle-body		
Ignition	Full-transistorised type with electronic advance		
Starter	Electric		
Gears	Five forward gears with reverse		
Transmission	Automatic with auto or manual shift modes		
Drive	4wd Direct drive-shafts with switchable 2wd/4wd and locking front differential		
Power Steering	-		
Front Suspension	Independent double-wishbone		
Rear Suspension	Independent double-wishbone (IRS)		
Adjustable Pre-load	Rear suspension		
Suspension Travel	Front: 147 mm Rear: 150 mm		
Front Brakes	Dual 200 mm hydraulic discs		
Rear Brake	170 mm hydraulic disc		
Tyres	Front: 24 x 8-12 Rear: 24 x 10-12		
Dimensions	L: 2667 mm W: 1270 mm H: 1808 mm		
Wheelbase	1854 mm		
Seat Height	703 mm		
Ground Clearance	216 mm		
Min. Turning Radius	3.9 m		
Fuel Capacity	15.5 L, incl. 4.2 L reserve		
Bed / Rack Capacity	204 kg		
Towing capacity	454 kg		
Dry weight	469 kg		
Colours	Red		

FOREMAN 520 PS	FOREMAN 520 IRS PS			FOREMAN 520 DCT IRS PS				
TRX520FM2* / TRX520FE2 (ES)	TRX520FM6			TRX520FA6				
Heavy duty ATV	4WD	*Available in Green	Heavy duty ATV	4WD	Available in Green	Heavy duty ATV	4WD	Available in Green
518 cc	518 cc			518 cc				
Liquid-cooled, wet-sump, longitudinally mounted OHV 4-stroke single cylinder	Liquid-cooled, wet-sump, longitudinally mounted OHV 4-stroke single cylinder			Liquid-cooled, wet-sump, longitudinally mounted OHV 4-stroke single cylinder				
96.0 mm x 71.5 mm	96.0 mm x 71.5 mm			96.0 mm x 71.5 mm				
PGM-FI, 36 mm throttle-body	PGM-FI, 36 mm throttle-body			PGM-FI, 36 mm throttle-body				
Full-transistorised type with electronic advance	Full-transistorised type with electronic advance			Full-transistorised type with electronic advance				
Electric	Electric			Electric				
Five forward gears plus reverse	Five forward gears plus reverse			Five forward gears plus reverse				
Auto clutch with manual FE2: electric shift	Auto clutch with manual shift			Automatic Dual Clutch Transmission (DCT) with auto-shifting or electric shift				
4wd Direct drive-shafts with TraxLok® switchable 2wd/4wd and locking front differential	4wd Direct drive-shafts with TraxLok® switchable 2wd/4wd and locking front differential			4wd Direct drive-shafts with TraxLok® switchable 2wd/4wd and locking front differential				
Power Steering	Power Steering			Power Steering				
Independent double-wishbone	Independent double-wishbone			Independent double-wishbone				
Swingarm with single shock	Dual A-Arm (IRS)			Dual A-Arm (IRS)				
Front and Rear suspension	Front and Rear suspension			Front and Rear suspension				
Front: 185 mm Rear: 215 mm	Front: 185 mm Rear: 215 mm			Front: 185 mm Rear: 215 mm				
190 mm dual hydraulic discs	190 mm dual hydraulic discs			190 mm dual hydraulic discs				
170 mm sealed mechanical drum	170 mm single hydraulic disc			170 mm single hydraulic disc				
Front: 25 x 8-12 Rear: 25 x 10-12	Front: 25 x 8-12 Rear: 25 x 10-12			Front: 25 x 8-12 Rear: 25 x 10-12				
L: 2185 mm W: 1204 mm H: 1237 mm FE2: L: 2103 mm W: 1204 mm H: 1220 mm	L: 2185 mm W: 1204 mm H: 1240 mm			L: 2185 mm W: 1204 mm H: 1237 mm				
1270 mm	1293 mm			1293 mm				
924 mm ES: 869 mm	919 mm			922 mm				
248 mm	251 mm			248 mm				
3.5 m	3.5 m			3.5 m				
14.7 L, incl. 4.9 L reserve	14.7 L, incl. 4.9 L reserve			14.7 L, incl. 4.9 L reserve				
Front: 44.9 kg / Rear: 84.8 kg	Front: 44.9 kg / Rear: 84.8 kg			Front: 44.9 kg / Rear: 84.8 kg				
384 kg	599 kg			599 kg				
283 kg FE2: 285 kg	304 kg			318 kg				
Red / Green*	Red / Green			Red / Green				

Technical Specifications



ATV MODEL	FOURTRAX 420	FOURTRAX 420 PS
MODEL NO.	TRX420FM1* / TRX420FE1 (ES)	TRX420FM2
	Utility work ATV 4WD *Available in Green	Utility work ATV 4WD Available in Green
Engine Size	420 cc	420 cc
Engine Type	Liquid-cooled, wet-sump, longitudinally mounted OHV 4-stroke single cylinder	Liquid-cooled, wet-sump, longitudinally mounted OHV 4-stroke single cylinder
Bore x Stroke	86.5 mm x 71.5 mm	86.5 mm x 71.5 mm
Fuel System	PGM-FI, 34 mm throttle-body fuel-injection system	PGM-FI, 34 mm throttle-body fuel-injection system
Ignition	Full-transistorised type with electronic advance	Full-transistorised type with electronic advance
Starter	Electric / Recoil	Electric / Recoil
Gears	Five forward gears plus reverse	Five forward gears plus reverse
Transmission	Auto clutch with manual FE1 : electric shift	Auto clutch with manual shift
Drive	4wd Direct drive-shafts with TraxLok® switchable 2wd/4wd and locking front differential	4wd Direct drive-shafts with TraxLok® switchable 2wd/4wd and locking front differential
Power Steering	-	Power Steering
Front Suspension	Independent double wishbone	Independent double wishbone
Rear Suspension	Swingarm with single shock	Swingarm with single shock
Adjustable Pre-load	Front and Rear suspension	Front and Rear suspension
Suspension Travel	Front: 170 mm Rear: 170 mm	Front: 170 mm Rear: 170 mm
Front Brakes	190 mm dual hydraulic discs	190 mm dual hydraulic discs
Rear Brake	160 mm sealed mechanical drum	160 mm sealed mechanical drum
Tyres	Front: 24 x 8-12 Rear: 24 x 10-11	Front: 24 x 8-12 Rear: 24 x 10-11
Dimensions	L: 2103 mm W: 1204 mm H: 1176 mm FE1: L: 2103 mm W: 1204 mm H: 1174 mm	L: 2103 mm W: 1204 mm H: 1176 mm
Wheelbase	1270 mm	1270 mm
Seat Height	855 mm	855 mm
Ground Clearance	183 mm	183 mm
Min. Turning Radius	2.8 m	2.8 m
Fuel Capacity	14.7 L, incl. 4.9 L reserve	14.7 L, incl. 4.9 L reserve
Rack Capacity	Front: 29.9 kg / Rear: 60 kg FE1: 60.3 kg	Front: 29.9 kg / Rear: 60 kg
Towing capacity	384 kg	384 kg
Dry weight	267 kg FE1: 269 kg	273 kg
Colours	Red / Green*	Red / Green

ATV MODEL	FOURTRAX 420 DCT PS	FOURTRAX 420 DCT IRS PS
MODEL NO.	TRX420FA2	TRX420FA6
	Utility work ATV 4WD	Utility work ATV 4WD
Engine Size	420 cc	420 cc
Engine Type	Liquid-cooled, wet-sump, longitudinally mounted OHV 4-stroke single cylinder	Liquid cooled, wet-sump, longitudinally mounted OHV 4-stroke single cylinder
Bore x Stroke	86.5 mm x 71.5 mm	86.5 mm x 71.5 mm
Fuel System	PGM-FI, 34 mm throttle-body fuel-injection system	PGM-FI, 34 mm throttle-body fuel-injection system
Ignition	Full-transistorised type with electronic advance	Full-transistorised type with electronic advance
Starter	Electric / Recoil	Electric / Recoil
Gears	Five forward gears plus reverse	Five forward gears plus reverse
Transmission	Automatic Dual Clutch Transmission (DCT) with auto-shifting or electric shift	Automatic Dual Clutch Transmission (DCT) with auto-shifting or electric shift
Drive	4wd Direct drive-shafts with TraxLok® switchable 2wd/4wd and locking front differential	4wd Direct drive-shafts with TraxLok® switchable 2wd/4wd and locking front differential
Power Steering	Power Steering	Power Steering
Front Suspension	Independent double wishbone	Independent double wishbone
Rear Suspension	Swingarm with single shock	Dual A-Arm (IRS)
Adjustable Pre-load	Front and Rear suspension	Front and Rear suspension
Suspension Travel	Front: 170 mm Rear: 170 mm	Front: 185 mm Rear: 215 mm
Front Brakes	190 mm dual hydraulic discs	190 mm dual hydraulic discs
Rear Brake	160 mm sealed mechanical drum	170 mm single hydraulic disc
Tyres	Front: 24 x 8-12 Rear: 24 x 10-11	Front: 24 x 8-12 Rear: 24 x 10-11
Dimensions	L: 2103 mm W: 1204 mm H: 1176 mm	L: 2146 mm W: 1204 mm H: 1203 mm
Wheelbase	1270 mm	1295 mm
Seat Height	855 mm	901 mm
Ground Clearance	183 mm	246 mm
Min. Turning Radius	2.8 m	3.5 m
Fuel Capacity	14.7 L, incl. 4.9 L reserve	14.7 L, incl. 4.9 L reserve
Rack Capacity	Front: 29.9 kg / Rear: 60 kg	Front: 29.9 kg / Rear: 60 kg
Towing capacity	384 kg	384 kg
Dry weight	291 kg	300 kg
Colours	Red	Red

Technology Glossary

At Honda, we have always been passionate about new technology. By constantly pushing the boundaries of what is possible, we are able to give you more. More performance, more fuel efficiency, more control. Take a look at our latest innovations to see how you can get the most from your ATV or UTV.



Manual Transmission

Get full control when manoeuvring or riding over taxing terrain, with manual shift gear changes and an automatic clutch mechanism.



Electric Shift Program (ESP)

Change gears quickly and smoothly, with a simple push of a handlebar mounted button.

Auto

Automatic Transmission

Delivering smooth and seamless automatic gear changes, for effortless acceleration over any terrain.

DCT

Dual Clutch Transmission (DCT)

Our DCT models provide smooth shifts and excellent control by utilising two clutches. When riding, the next gear change is preselected by the second clutch, and ready to go when needed.



Adjustable Preload Suspension

Tailor the ride to suit the load, riding conditions and task at hand, greatly improving comfort and handling.



Independent Rear Suspension (IRS)

Gives increased comfort, greater ground clearance with longer travel shock absorption over tougher terrain, with an improved tow capacity.



Power Steering (PS)

Reduces steering effort and kickback through the handlebar for extended all-day riding comfort, and improved control. The re-mapped ECU also gives greater steering assist at low speed – ideal for lighter riders, or those who enjoy spending long hours in the saddle.



Traxlok™

Quickly switch between the nimble manoeuvrability and light steering of 2wd, and the go-anywhere traction of 4wd, with a simple selector lever.



Hi/Lo Gear Range Selector

Delivers more low-down torque, giving plenty of pulling power for heavy loads.



Forward/Reverse Skip

Available on our Electric Shift Program (ESP) and DCT models, this single lever bypasses neutral and allows you to shift easily and quickly between forward and reverse.



AP Suretrac™

Delivers torque-sensitive, limited-slip differential for optimum traction in slippery conditions.



Full Differential Lock

Lock the front differential with the push of a button, to drive full power to all wheels – a real benefit in loose or rocky terrain or muddy conditions.



Enthusiast. Owner. Dreamer.

At Honda, we don't follow the easy path – we forge new ones. We believe in pushing limits, not settling for them.

Every ATV and UTV we build is a reflection of that drive – a relentless pursuit of better, stronger, smarter.

Innovation isn't a milestone for us – it's a mindset. From Traxlok® to dual-clutch transmission and AP Suretrac®, we lead with breakthroughs that redefine what's possible.

We challenge the status quo, constantly rethinking what an ATV or UTV can be. That spirit lives in every Honda machine – and in every rider who dares to go further.

Because at Honda, we believe it's our dreams that move us – and we're just getting started.





The specific details of this brochure do not apply to any particular product supplied or offered for sale. Manufacturers reserve the right to vary specifications, including colours, with or without notice at such times in such manner as deemed appropriate. Major as well as minor changes may be involved. Every effort, however, is made to ensure the accuracy of the particulars contained in this brochure. Consult your Dealer for details regarding the specifications of any featured product. This publication shall not constitute – under any circumstances whatsoever – an offer by the Company to any individual. All sales are made by the Distributor or Dealer subject to and with the benefit of the standard Conditions of Sale and Warranty provided by the Distributor or Dealer, copies of which may be obtained upon request. While efforts are made to ensure specification accuracy, brochures are prepared and printed several months in advance of distribution and consequently cannot always immediately reflect either changes in specification or in some isolated cases the provision of a particular feature. Customers are always advised to discuss specific details with the supplying Dealer, especially if a selection is dependent upon one of the features advertised. Please contact your local dealer for information and specifications. Please note that the fuel consumption figures provided are results obtained by Honda under standardised testing conditions prescribed by WMTc. Tests are conducted on a rolling road using a standard version of the vehicle with only one rider and no additional optional equipment. Actual fuel consumption may vary depending on how you ride, how you maintain your vehicle, weather, road conditions, tyre pressure, installation of accessories, cargo, rider and passenger weight, and other factors. You accept that if you do go ahead and make a purchase or enter into any kind of transaction, whether for payment or not, you did so entirely in reliance on your own skill and judgement and not on that of anyone else.

RIDE WITH STYLE Read the owner's manual thoroughly. Get to know your machine and its capabilities. Concentration assists anticipation. Observe other road users' movements. Brake in plenty of time. Always wear a helmet and quality kit, ride fit and NEVER after drinking alcohol. Good roadcraft and courtesy identify the skilled and stylish rider. Honda endorse the law that all helmet visors must comply with BS 4110. Visors that transmit less than 50% of visible light cannot legally be used on the road.

Honda Motor Europe – Motorcycles
Cain Road, Bracknell, Berkshire, RG12 1HL England
honda.co.uk



Please don't bin me.
Pass me on to a
friend or recycle me.

Honda Motor Europe sources
paper responsibly from
manufacturers within the EU.



BLUE SKIES FOR
OUR CHILDREN